



National Association of Insurance Commissioners



April 19, 2018

Index

A

Accounting Practices and Procedures (E) Task Force	55
Actuarial Opinion (C) Working Group	33
Actuarial Value (B) Subgroup	19
Advisory Organization Examination Oversight (C) Working Group	26
Annuity Disclosure (A) Working Group	12
Annuity Suitability (A) Working Group	13
Antifraud (D) Task Force	39
Antifraud Education Enhancement (D) Working Group	40
Antifraud Technology (D) Working Group	40
Audit Committee	10
Auto Insurance (C/D) Working Group	27

B

Big Data (EX) Working Group	9
Biographical Third-Party Review (E) Subgroup	54
Blanks (E) Working Group	56

C

C-3 Phase II/AG 43(E/A) Subgroup	60
Capital Adequacy (E) Task Force	57
Casualty Actuarial and Statistical (C) Task Force	32
Catastrophe Insurance (C) Working Group	28
Catastrophe Risk (E) Subgroup	62
Climate Change and Global Warming (C) Working Group	28
Committee Structure	4
CO-OP Solvency and Receivership (B) Subgroup	16

E

Electronic Workpaper (E) Working Group	64
ERISA (B) Working Group	23
Examination Oversight (E) Task Force	63
Executive (EX) Committee	5
Experience Reporting (A) Subgroup	14

F

Financial Analysis (E) Working Group	49
Financial Analysis Handbook (E) Working Group	64
Financial Analysis Research and Development (E) Working Group	65
Financial Condition (E) Committee	48
Financial Examiners Coordination (E) Working Group	65
Financial Examiners Handbook (E) Technical Group	66
Financial Regulation Standards and Accreditation (F) Committee	74
Financial Stability (EX) Task Force	6

G

Government Relations (EX) Leadership Council	7
Group Capital Calculation (E) Working Group	49
Group Solvency Issues (E) Working Group	50

H

Health Actuarial (B) Task Force	18
Health Care Reform Actuarial (B) Working Group	19
Health Care Reform Regulatory Alternatives (B) Working Group	17
Health Insurance and Managed Care (B) Committee	16
Health Reserves (B) Subgroup	19
Health Risk-Based Capital (E) Working Group	58

I

Individual Disability Valuation Table Implementation (B) Subgroup	18
Information Systems (EX1) Task Force	11
Innovation and Technology (EX) Task Force	8
Internal Administration (EX1) Subcommittee	10
International Insurance Relations (G) Committee	75
Investment Risk-Based Capital (E) Working Group	58
IT Examination (E) Working Group	66
IUL Illustration (A) Subgroup	15

L

Lender-Placed Insurance Model Act (C) Working Group	29
Life Actuarial (A) Task Force	14
Life Insurance and Annuities (A) Committee	12
Life Insurance Buyer's Guide (A) Working Group	13
Life Insurance Illustration Issues (A) Working Group	13
Life Risk-Based Capital (E) Working Group	59
Liquidity Assessment (EX) Subgroup	6
Long Term Care Insurance (B/E) Task Force	21, 67
Longevity Risk (A/E) Subgroup	15, 60
Long-Term Care Actuarial (B) Working Group	20
Long-Term Care Pricing (B) Subgroup	21
Long-Term Care Shopper's Guide (B) Working Group	25
Long-Term Care Valuation (B) Subgroup	21

M

Market Actions (D) Working Group	38
Market Analysis Procedures (D) Working Group	42
Market Conduct Annual Statement Blanks (D) Working Group	43
Market Conduct Examination Standards (D) Working Group	43
Market Information Systems (D) Task Force	41
Market Information Systems Research & Development (D) Working Group	41
Market Regulation and Consumer Affairs (D) Committee	38
Market Regulation Certification (D) Working Group	44
Medical Professional Liability (C) Working Group	29
Members By Zones	79
Midwest Zone	79
Model Law Review (A) Subgroup	14
Mortgage Guaranty Insurance (E) Working Group	51

N

NAIC/AICPA (E) Working Group	51
NAIC/American Indian and Alaska Native Liaison Committee	77
NAIC/Consumer Liaison Committee	76

NAIC/IAIABC Joint (C) Working Group	37
NAIC/Industry Liaison Committee	77
NAIC/State Government Liaison Committee	78
National Treatment & Coordination (E) Working Group	54
Northeast Zone	79

O

Operational Risk (E) Subgroup	61
ORSA Implementation (E) Subgroup	50

P

Pre-Dispute Mandatory Arbitration Clauses (D) Working Group ..	44
Producer Licensing (D) Task Force	46
Producer Licensing Uniformity (D) Working Group	47
Property and Casualty Insurance (C) Committee	26
Property and Casualty Risk-Based Capital (E) Working Group ...	61
Public Adjuster (C/D) Working Group	45

Q

Qualified Jurisdiction (E) Working Group	72
--	----

R

Receivership and Insolvency (E) Task Force	68
Receivership Financial Analysis (E) Working Group	69
Receivership Large Deductible Workers Compensation (E) Working Group	69
Receivership Model Law (E) Working Group	70
Regulatory Framework (B) Task Force	22
Reinsurance (E) Task Force	71
Reinsurance Financial Analysis (E) Working Group	72
Risk Retention Group (E) Task Force	73
Risk-Focused Surveillance (E) Working Group	52
Risk-Limiting Contracts (E) Working Group	53

S

Senior Issues (B) Task Force	24
Short Duration Long-Term Care Policies (B) Subgroup	25
Southeast Zone	79
Speed to Market (EX) Working Group	10
State Rate Review (B) Subgroup	20
Statistical Data (C) Working Group	33
Statutory Accounting Principles (E) Working Group	56
Surplus Lines (C) Task Force	34
Surplus Lines (C) Working Group	34

T

Technical Consulting (EX1) Working Group	11
Terrorism Insurance Implementation (C) Working Group	30
Title Insurance (C) Task Force	35
Title Insurance Financial Reporting (C) Working Group	35
Transparency and Readability of Consumer Information (C) Working Group	30
Travel Insurance (C) Working Group	31

U

Uniform Education (D) Working Group	47
---	----

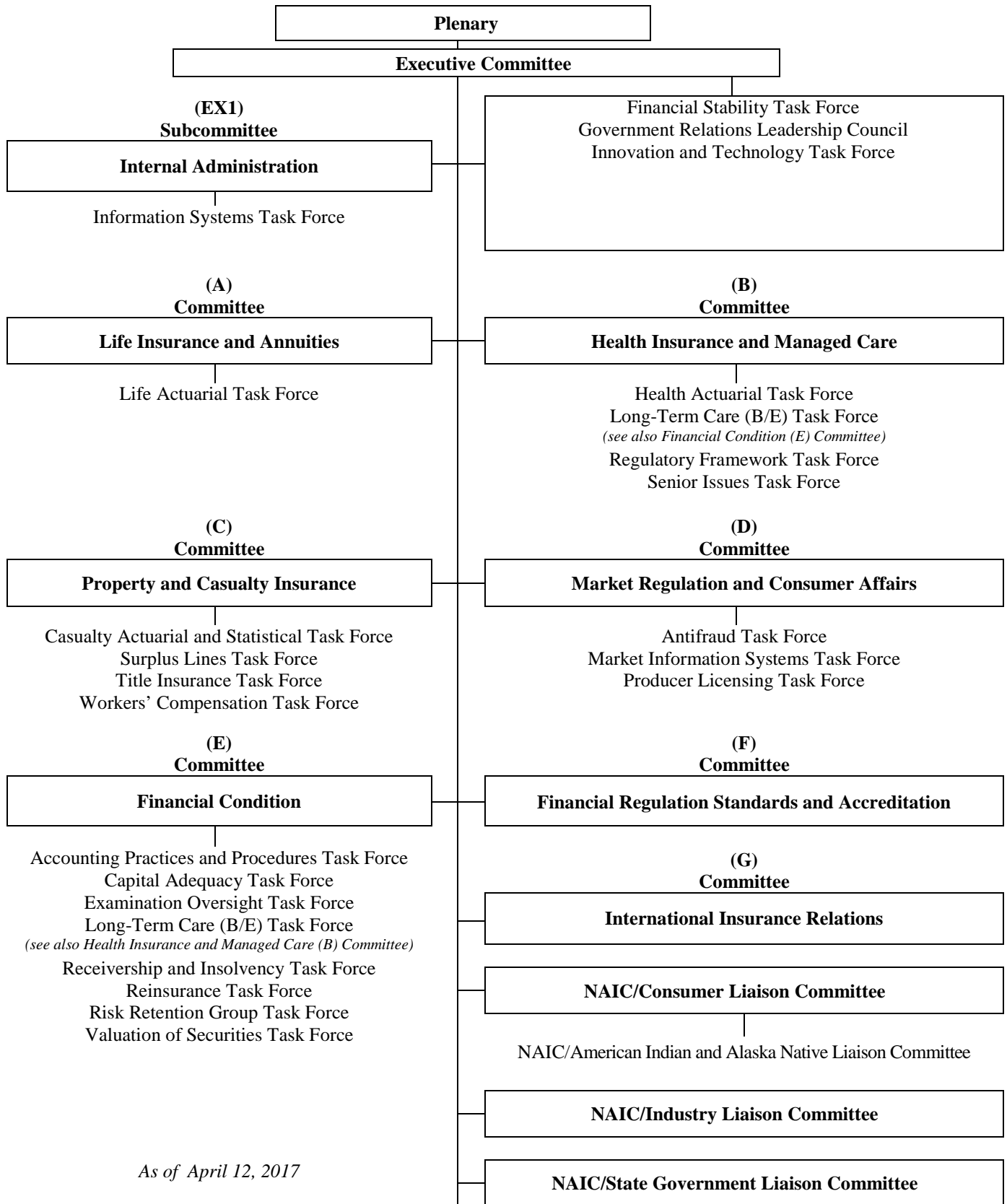
V

Valuation Analysis (E) Working Group	53
Valuation of Securities (E) Task Force	73
Variable Annuities Issues (E) Working Group	54
VM-22 (A) Subgroup	15

W

Western Zone	79
Workers' Compensation (C) Task Force	36

2018 Committee Structure



2018 EXECUTIVE (EX) COMMITTEE

Julie Mix McPeak, President	Tennessee
Eric A. Cioppa, President-Elect	Maine
Raymond G. Farmer, Vice President	South Carolina
Gordon I. Ito, Secretary-Treasurer	Hawaii

Most Recent Past President

Ted Nickel	Wisconsin
------------	-----------

Northeast Zone

Katharine L. Wade, Chair	Connecticut
Elizabeth Kelleher Dwyer, Vice Chair	Rhode Island
Stephen C. Taylor, Secretary	District of Columbia

Southeast Zone

Jim L. Ridling, Chair	Alabama
Mike Chaney, Vice Chair	Mississippi
James J. Donelon, Secretary	Louisiana

Midwest Zone

John D. Doak, Chair	Oklahoma
Stephen W. Robertson, Vice Chair	Indiana
Larry Deiter, Secretary	South Dakota

Western Zone

Dean L. Cameron, Chair	Idaho
Todd E. Kiser, Vice Chair	Utah
Lori K. Wing-Heier, Secretary	Alaska

Staff Support: Andrew J. Beal/Kay Noonan

As of 12/4/2017

FINANCIAL STABILITY (EX) TASK FORCE

Peter Hartt, Chair	New Jersey
Katharine L. Wade, Vice Chair	Connecticut
Dave Jones	California
Stephen C. Taylor	District of Columbia
David Altmaier	Florida
Doug Ommen	Iowa
Jennifer Hammer	Illinois
Gary Anderson	Massachusetts
Chlora Lindley-Myers	Missouri
Mike Causey	North Carolina
Bruce R. Ramage	Nebraska
Maria T. Vullo	New York
Jessica Altman	Pennsylvania
Kent Sullivan	Texas
Ted Nickel	Wisconsin

NAIC Support Staff: Elise Liebers/John Hopman/Mark Sagat/Todd Sells

Liquidity Assessment (EX) Subgroup

of the Financial Stability (EX) Task Force

Justin Schrader, Chair	Nebraska
Kathy Belfi/John Loughran	Connecticut
Philip Barlow	District of Columbia
Ray Spudeck	Florida
Bruce Sartain	Illinois
Fred Andersen	Minnesota
James V. Regalbuto/William Carmello	New York
Doug Slape/Mike Boerner	Texas

NAIC Support Staff: Elise Liebers/Ani Verma/Todd Sells

GOVERNMENT RELATIONS (EX) LEADERSHIP COUNCIL

Julie Mix McPeak, Chair	Tennessee
Eric A. Cioppa, Vice Chair	Maine
Allen W. Kerr	Arkansas
Katharine L. Wade	Connecticut
David Altmaier	Florida
Gordon I. Ito	Hawaii
James J. Donelon	Louisiana
Chlora Lindley-Myers	Missouri
Maria T. Vullo	New York
John D. Doak	Oklahoma
Elizabeth Kelleher Dwyer	Rhode Island
Raymond G. Farmer	South Carolina
Mike Kreidler	Washington
Ted Nickel	Wisconsin
Tom Glause	Wyoming

NAIC Support Staff: Ethan Sonnichsen

INNOVATION AND TECHNOLOGY (EX) TASK FORCE

Patrick M. McPharlin, Chair	Michigan
Jon Godfread, Vice Chair	North Dakota
Ted Nickel, Vice Chair	Wisconsin
Jim L. Ridling	Alabama
Lori K. Wing-Heier	Alaska
Peter Fuimaono	American Samoa
Keith Schraad	Arizona
Allen W. Kerr	Arkansas
Dave Jones	California
Michael Conway	Colorado
Katharine L. Wade	Connecticut
Stephen C. Taylor	District of Columbia
David Altmaier	Florida
Dean L. Cameron	Idaho
Jennifer Hammer	Illinois
Doug Ommen	Iowa
Ken Selzer	Kansas
Nancy G. Atkins	Kentucky
James J. Donelon	Louisiana
Al Redmer, Jr.	Maryland
Gary Anderson	Massachusetts
Jessica Looman	Minnesota
Chlora Lindley-Myers	Missouri
Mark O Rabauliman	N. Mariana Islands
Bruce R. Ramge	Nebraska
Barbara D. Richardson	Nevada
Roger A. Sevigny	New Hampshire
Marlene Caride	New Jersey
Mike Causey	North Carolina
Jillian Froment	Ohio
John D. Doak	Oklahoma
Andrew Stolfi	Oregon
Jessica Altman	Pennsylvania
Elizabeth Kelleher Dwyer	Rhode Island
Raymond G. Farmer	South Carolina
Larry Deiter	South Dakota
Julie Mix McPeak	Tennessee
Kent Sullivan	Texas
Todd E. Kiser	Utah
Michael S. Pieciak	Vermont
Scott A. White	Virginia
Allan L. McVey	West Virginia

NAIC Support Staff: Scott Morris/Denise Matthews

Big Data (EX) Working Group
of the Innovation and Technology (EX) Committee

Doug Ommen, Chair	Iowa
Elizabeth Kelleher Dwyer, Vice Chair	Rhode Island
Charles Angell/Dan Davis	Alabama
Lori Wing-Heier	Alaska
Dave Jones/Joel Laucher	California
Katharine L. Wade	Connecticut
Franklin T. Pyle	Delaware
Stephen C. Taylor	District of Columbia
Susanne Murphy	Florida
Michael Rohan	Illinois
Rich Piazza	Louisiana
Benjamin Yardley	Maine
Robert Baron	Maryland
Rhonda J. Fossitt	Michigan
Martin Fleischhacker/Pam Gergen	Minnesota
Brent Kabler/Angela Nelson	Missouri
Rajat Jain/Gennady Stoylarov	Nevada
Roger A. Sevigny	New Hampshire
Marlene Caride	New Jersey
Jillian Froment	Ohio
John D. Doak	Oklahoma
Andrew Stolfi	Oregon
Mike McKenney	Pennsylvania
Kendall Buchanan	South Carolina
J'ne Byckovski/Leah Gillum	Texas
TBD	Utah
Michael S. Pieciak	Vermont
Mike Kreidler	Washington

NAIC Staff Support: Tim Mullen/Kris DeFrain/Denise Matthews/Randy Helder

Speed to Market (EX) Working Group

of the Innovation and Technology (EX) Task Force

John G. Franchini, Chair	New Mexico
Maureen Motter, Vice Chair	Ohio
Jerry Workman	Alabama
Wally Thomas	Alaska
Allen W. Kerr	Arkansas
Shirley Taylor	Colorado
Trinidad Navarro/Franklin T. Pyle	Delaware
Stephen C. Taylor	District of Columbia
Dean L. Cameron	Idaho
Reid McClintock	Illinois
Heather Droge	Kansas
Jessica Looman	Minnesota
Angela Nelson	Missouri
Roger A. Sevigny	New Hampshire
Ted Hamby	North Carolina
Jon Godfread	North Dakota
Mark O. Rabauliman	Northern Mariana Islands
John D. Doak/Cuc Nguyen	Oklahoma
Andrew Stolfi	Oregon
Kent Sullivan	Texas
Tanji Northrup	Utah
Rebecca Nichols	Virginia
Lichiou Lee	Washington
Allan L. McVey	West Virginia

NAIC Staff Support: Kris DeFrain

INTERNAL ADMINISTRATION (EX1) SUBCOMMITTEE

Julie Mix McPeak, Chair	Tennessee
Eric A. Cioppa, Vice Chair	Maine
Katharine L. Wade	Connecticut
Gordon I. Ito	Hawaii
Dean L. Cameron	Idaho
Raymond G. Farmer	South Carolina
Larry Deiter	South Dakota
Ted Nickel	Wisconsin

NAIC Support Staff: Andrew J. Beal/Kay Noonan/Jim Woody

AUDIT COMMITTEE

Gordon I. Ito, Chair	Hawaii
David Altmaier	Florida
Ken Selzer	Kansas
Gary Anderson	Massachusetts
Raymond G. Farmer	South Carolina
Ted Nickel	Wisconsin
Tom Glause	Wyoming

NAIC Support Staff: Jim Woody

INFORMATION SYSTEMS (EX1) TASK FORCE

Al Redmer Jr, Chair	Maryland
Chlora Lindley-Myers, Vice Chair	Missouri
Lori K. Wing-Heier	Alaska
Allen W. Kerr	Arkansas
Dave Jones	California
Ken Selzer	Kansas
Nancy G. Atkins	Kentucky
Mark O Rabauliman	N. Mariana Islands
Roger A. Sevigny	New Hampshire
Jillian Froment	Ohio
John D. Doak	Oklahoma
Kent Sullivan	Texas
Scott A. White	Virginia

NAIC Support Staff: Cheryl McGee/Sherry Stevens

Technical Consulting (EX1) Working Group

of the Information Systems (EX1) Task Force

David Noronha, Chair	California-
Letty Hardee	Arkansas
Paula Keen	Maryland
Cynthia Amann	Missouri
Angela Dingus	Ohio

NAIC Support Staff: Cheryl McGee/Sherry Stevens

LIFE INSURANCE AND ANNUITIES (A) COMMITTEE

Doug Ommen, Chair	Iowa
Jillian Froment, Vice Chair	Ohio
Jim L. Ridling	Alabama
Peter Fuimaono	American Samoa
Dave Jones	California
Stephen C. Taylor	District of Columbia
Ralph T. Hudgens	Georgia
Dean L. Cameron	Idaho
James J. Donelon	Louisiana
Bruce R. Ramage	Nebraska
Barbara D. Richardson	Nevada
Maria T. Vullo	New York
Jon Godfread	North Dakota
Elizabeth Kelleher Dwyer	Rhode Island
Allan L. McVey	West Virginia

NAIC Support Staff: Jennifer R. Cook /Jolie H. Matthews

Annuity Disclosure (A) Working Group

of the Life Insurance and Annuities (A) Committee

Mike Yanacheak, chair	Iowa
Chris Struk	Florida
Julie Holmes and Craig Van Aalst	Kansas
Adewole Odumade	Maryland
John Robinson	Minnesota
Frank Stone	Oklahoma
Sarah Neil/ Matt Gendron	Rhode Island
Doug Danzeiser/Phil Reyna	Texas

NAIC Support Staff: Jennifer Cook

LIFE INSURANCE AND ANNUITIES (A) COMMITTEE

(Continued)

Annuity Suitability (A) Working Group

of the Life Insurance and Annuities (A) Committee

Dean L. Cameron, Chair	Idaho
Doug Ommen, Vice Chair	Iowa
Jodi Lerner	California
Frank Pyle	Delaware
Tate Flott/Stacy Rinehart	Kansas
Adewole Odumade	Maryland
Catherine Kirby	Michigan
Matt Holman	Nebraska
Keith Nyhan	New Hampshire
James Regalbuto	New York
Michelle Rafeld	Ohio
Frank Stone	Oklahoma
Elizabeth Kelleher Dwyer	Rhode Island
Michael Humphreys/Lorrie Brouse	Tennessee
Richard Wicka	Wisconsin

NAIC Support Staff: Jolie H. Matthews

Life Insurance Illustration Issues (A) Working Group

of the Life Insurance and Annuities (A) Committee

Richard Wicka, Chair	Wisconsin
Perry Kupferman/Jodi Lerner	California
Chris Struk/Eric Johnson	Florida
Teresa Winer	Georgia
Mike Yanacheak	Iowa
Mary Mealer	Missouri
Bruce R. Range/Matt Holman	Nebraska
Jana Jarrett/Tynesia Dorsey	Ohio
Brian Hoffmeister	Tennessee
Jan Graeber/Phil Reyna/Raja Malkani	Texas

NAIC Support Staff: Jennifer Cook

Life Insurance Buyer's Guide (A) Working Group

of the Life Insurance and Annuities (A) Committee

Mary Mealer, Chair	Missouri
Teresa Winer	Georgia
Matt Holman	Nebraska
James Regalbuto	New York
Jana Jarrett	Ohio
David J. Buono Jr.	Pennsylvania
Elizabeth Kelleher Dwyer/Matt Gendron/ Sarah Neil	Rhode Island

NAIC Support Staff: Jennifer Cook

LIFE INSURANCE AND ANNUITIES (A) COMMITTEE
(Continued)

Model Law Review (A) Subgroup

of the Life Insurance and Annuities (A) Committee

Michael Kakuk, Chair	Montana
Perry Kupferman	California
Chris Struk	Florida
Kay Godfredsen	Iowa
Rhonda Ahrens	Nebraska

NAIC Support Staff: Jennifer Cook

LIFE ACTUARIAL (A) TASK FORCE

Kent Sullivan, Chair	Texas
Jillian Froment, Vice Chair	Ohio
Jim L. Ridling	Alabama
Lori K. Wing-Heier	Alaska
Dave Jones	California
Michael Conway	Colorado
Katharine L. Wade	Connecticut
Jennifer Hammer	Illinois
Stephen W. Robertson	Indiana
Doug Ommen	Iowa
Ken Selzer	Kansas
Jessica Looman	Minnesota
Chlora Lindley-Myers	Missouri
Bruce R. Range	Nebraska
Marlene Caride	New Jersey
Maria T. Vullo	New York
John D. Doak	Oklahoma
Todd E. Kiser	Utah
Scott A. White	Virginia

NAIC Support Staff: Reggie Mazyck/Eric King

Experience Reporting (A) Subgroup

of the Life Actuarial (A) Task Force

Fred Andersen, Chair	Minnesota
Perry Kupferman	California
Nicole Boyd	Kansas
Rhonda Ahrens	Nebraska
William Carmello	New York
Mike Boerner	Texas

NAIC Support Staff: Reggie Mazyck

LIFE INSURANCE AND ANNUITIES (A) COMMITTEE

(Continued)

IUL Illustration (A) Subgroup

of the Life Actuarial (A) Task Force

Fred Andersen, Chair	Minnesota
Ted Chang	California
Mike Yanacheak	Iowa
Rhonda Ahrens	Nebraska
William Carmello	New York
Pete Weber	Ohio
Jan Graeber/Phil Reyna	Texas
Craig Chupp	Virginia

NAIC Support Staff: Reggie Mazyck

Joint Longevity Risk (A/E) Subgroup

of the Life Actuarial (A) Task Force and Life Risk-Based Capital (E) Working Group

See also Financial Condition (E) Committee

VM-22 (A) Subgroup

of the Life Actuarial (A) Task Force

John Robinson, Chair	Minnesota
Mike Yanacheak	Iowa
Nicole Boyd	Kansas
William Leung	Missouri
Rhonda Ahrens	Nebraska
Seong-min Eom	New Jersey
William Carmello	New York
Tomasz Serbinowski	Utah
Craig Chupp	Virginia

NAIC Support Staff: Reggie Mazyck

HEALTH INSURANCE AND MANAGED CARE (B) COMMITTEE

Dean L. Cameron, Chair	Idaho
Jessica Altman, Vice Chair	Pennsylvania
Lori K. Wing-Heier	Alaska
Nancy G. Atkins	Kentucky
Al Redmer Jr.	Maryland
Jessica Looman	Minnesota
Mike Chaney	Mississippi
Matthew Rosendale	Montana
Roger A. Sevigny	New Hampshire
Mike Causey	North Carolina
Larry Deiter	South Dakota
Todd E. Kiser	Utah
Osbert E. Potter	Virgin Islands
Mike Kreidler	Washington
Ted Nickel	Wisconsin

NAIC Support Staff: Jolie H. Matthews/Brian R. Webb/Jennifer R. Cook

CO-OP Solvency and Receivership (B) Subgroup

Doug Ommen, Chair	Iowa
Katharine L. Wade, Vice Chair	Connecticut
Keith Schraad	Arizona
Michael Conway	Colorado
Dean L. Cameron	Idaho
Jennifer Hammer	Illinois
Nancy G. Atkins	Kentucky
James J. Donelon	Louisiana
Eric A. Cioppa	Maine
Gary Anderson	Massachusetts
Patrick McPharlin	Michigan
Matthew Rosendale	Montana
Bruce R. Ramage	Nebraska
Barbara D. Richardson	Nevada
Roger A. Sevigny	New Hampshire
Marlene Caride	New Jersey
John G. Franchini	New Mexico
Maria T. Vullo	New York
Jillian Froment	Ohio
Andrew Stolfi	Oregon
Raymond G. Farmer	South Carolina
Julie Mix McPeak	Tennessee
Todd E. Kiser	Utah
Allan L. McVey	West Virginia
Ted Nickel	Wisconsin

NAIC Staff Support: Brian Webb/Kay Noonan/ Jane Koenigsman

HEALTH INSURANCE AND MANAGED CARE (B) COMMITTEE

(Continued)

Health Care Reform Regulatory Alternatives (B) Working Group

Ted Nickel, Chair	Wisconsin
Roger A. Sevigny, Vice Chair	New Hampshire
Lori K. Wing-Heier	Alaska
Susan Jennette	Delaware
Craig Wright	Florida
Kathy McGill	Idaho
Paulette Dove	Illinois
Alexandria Peck	Indiana
Doug Ommen	Iowa
Julie Holmes	Kansas
Robert Wake	Maine
Chloria Lindley-Myers	Missouri
Matthew Rosendale	Montana
Martin Swanson	Nebraska
Mackay Moore	Nevada
Kristine Mauer/Gale Simon	New Jersey
Troy Oechsner	New York
Jon Godfread	North Dakota
Mark O. Rabauliman	Northern Mariana Islands
James Mills	Oklahoma
Katie Dzurec	Pennsylvania
Kendall Buchanan	South Carolina
Melissa Klemann	South Dakota
Michael Humphreys	Tennessee
Jan Graeber	Texas
Tanji Northrup	Utah
Osbert E. Potter	Virgin Islands
Molly Nollette	Washington
Tom Glause	Wyoming

NAIC Support Staff: Jolie H. Matthews

HEALTH INSURANCE AND MANAGED CARE (B) COMMITTEE

(Continued)

HEALTH ACTUARIAL (B) TASK FORCE

Patrick M. McPharlin, Chair	Michigan
Mike Chaney, Vice Chair	Mississippi
Jim L. Ridling	Alabama
Lori K. Wing-Heier	Alaska
Peter Fuimaono	American Samoa
Dave Jones	California
Michael Conway	Colorado
Katharine L. Wade	Connecticut
Stephen C. Taylor	District of Columbia
David Altmaier	Florida
Dean L. Cameron	Idaho
Stephen W. Robertson	Indiana
Ken Selzer	Kansas
Eric A. Cioppa	Maine
Jessica Looman	Minnesota
Bruce R. Ramage	Nebraska
Marlene Caride	New Jersey
John G. Franchini	New Mexico
Maria T. Vullo	New York
Mike Causey	North Carolina
Jillian Froment	Ohio
John D. Doak	Oklahoma
Jessica Altman	Pennsylvania
Raymond G. Farmer	South Carolina
Kent Sullivan	Texas
Todd E. Kiser	Utah
Scott A. White	Virginia
Mike Kreidler	Washington
Allan L. McVey	West Virginia

NAIC Support Staff: Eric King

Individual Disability Valuation Table Implementation (B) Subgroup

of the Health Actuarial (B) Task Force

Steve Ostlund, Chair	Alabama
Perry Kupferman	California
Nicole Boyd	Kansas
Rhonda Ahrens	Nebraska
William Carmello	New York
Mike Boerner	Texas

NAIC Support Staff: Eric King

HEALTH INSURANCE AND MANAGED CARE (B) COMMITTEE

(Continued)

Health Reserves (B) Subgroup

of the Health Actuarial (B) Task Force

Steve Ostlund, Chair)	Alabama
Lisa Parker	Florida
Rhonda Ahrens	Nebraska
William Carmello	New York
Mike Boerner/Jan Graeber	Texas

NAIC Support Staff: Eric King

Health Care Reform Actuarial (B) Working Group

of the Health Actuarial (B) Task Force

David Shea, Chair	Virginia
Steve Ostlund	Alabama
Jacob Lauten	Alaska
Paul Lombardo	Connecticut
Wes Trexler	Idaho
Nicole Boyd	Kansas
Kristi Bohn	Minnesota
TBD	New Jersey
Frank Horn	New York
Laura Miller/Nancy Hubler	Ohio
Frank Stone	Oklahoma
Andrew Dvorine	South Carolina
Jan Graeber	Texas
Jaakob Sundberg	Utah
J.P. Wieske	Wisconsin
Lichiou Lee	Washington

NAIC Support Staff: Eric King

Actuarial Value (B) Subgroup

of the Health Care Reform Actuarial (B) Working Group

Kevin Dyke, Chair	Michigan
Wanchin Chou	Connecticut
Marti Hooper	Maine
Kristi Bohn	Minnesota
Andrew Dvorine/ Shari Miles	South Carolina
Jan Graeber	Texas
David Shea	Virginia

NAIC Support Staff: Eric King

HEALTH INSURANCE AND MANAGED CARE (B) COMMITTEE

(Continued)

State Rate Review (B) Subgroup

of the Health Care Reform Actuarial (B) Working Group

David Shea, Chair	Virginia
Steve Ostlund	Alabama
Jacob Lauten	Alaska
Dan Greer	California
Paul Lombardo	Connecticut
Wes Trexler	Idaho
Nicole Boyd	Kansas
Marti Hooper	Maine
Kevin Dyke	Michigan
Kristi Bohn	Minnesota
Annette James	Nevada
David Sky	New Hampshire
Frank Horn	New York
Laura Miller/Nancy Hubler	Ohio
Michael Sink	Oregon
Andrew Dvorine	South Carolina
Jan Graeber	Texas
Jaakob Sundberg	Utah
Joylynn Fix	West Virginia

NAIC Support Staff: Eric King

Long- Term Care Actuarial (B) Working Group

of the Health Actuarial (B) Task Force

Perry Kupferman, Chair	California
Steve Ostlund	Alabama
Paul Lombardo	Connecticut
Lisa Parker	Florida
Nicole Boyd	Kansas
Weston Trexler	Idaho
Marti Hooper	Maine
Kristi Bohn	Minnesota
Rhonda Ahrens	Nebraska
TBD	New Mexico
William Carmello	New York
Laura Miller	Ohio
Frank Stone	Oklahoma
Tracie Gray	Pennsylvania
Andrew Dvorine	South Carolina
Jan Graeber/Mike Boerner	Texas
Tomasz Serbinowski	Utah

NAIC Support Staff: Eric King

HEALTH INSURANCE AND MANAGED CARE (B) COMMITTEE

(Continued)

Long-Term Care Pricing (B) Subgroup

of the Long-Term Care Actuarial (B) Working Group

Jan Graeber, Chair	Texas
Steve Ostlund	Alabama
Greg Campbell	Alaska
Perry Kupferman	California
Paul Lombardo	Connecticut
Benjamin Ben	Florida
Weston Trexler	Idaho
Marti Hooper	Maine
Kristi Bohn	Minnesota
William Leung	Missouri
Rhonda Ahrens	Nebraska
David Sky	New Hampshire
TBD	New Mexico
Frank Horn	New York
Bob Potter	North Carolina
Laura Miller	Ohio
David Ball	Oregon
Andrew Dvorine	South Carolina
Tomasz Serbinowski	Utah
Joylynn Fix	West Virginia

NAIC Staff Support: Eric King

Long-Term Care Valuation (B) Subgroup

of the Long-Term Care Actuarial (B) Working Group

Fred Andersen, Chair	Minnesota
Steve Ostlund	Alabama
Perry Kupferman	California
Tricia Dave	Connecticut
Lisa Parker	Florida
Nicole Boyd	Kansas
Rhonda Ahrens	Nebraska
Annette James	Nevada
TBD	New Mexico
William Carmello	New York
Mike Boerner/Jan Graeber	Texas
Tomasz Serbinowski	Utah

NAIC Staff Support: Eric King

LONG TERM CARE INSURANCE (B/E) TASK FORCE

See the Financial Condition (E) Committee

HEALTH INSURANCE AND MANAGED CARE (B) COMMITTEE

(Continued)

REGULATORY FRAMEWORK (B) TASK FORCE

Ted Nickel, Chair	Wisconsin
Michael Conway, Vice Chair	Colorado
Lori K. Wing-Heier	Alaska
Allen W. Kerr	Arkansas
Peter Fuimaono	American Samoa
Dave Jones	California
Stephen C. Taylor	District of Columbia
David Altmaier	Florida
Doug Ommen	Iowa
Dean L. Cameron	Idaho
Ken Selzer	Kansas
Nancy G. Atkins	Kentucky
Gary Anderson	Massachusetts
Al Redmer, Jr.,	Maryland
Eric A. Cioppa	Maine
Jessica Looman	Minnesota
Chloria Lindley-Myers	Missouri
Mike Causey	North Carolina
Jon Godfread	North Dakota
Bruce R. Ramge	Nebraska
Roger A. Sevigny	New Hampshire
John D. Doak	Oklahoma
Jessica Altman	Pennsylvania
Larry Deiter	South Dakota
Kent Sullivan	Texas
Todd E. Kiser	Utah
Scott A. White	Virginia
Mike Kreidler	Washington
Allan L. McVey	West Virginia

NAIC Support Staff: Jolie H. Matthews/Jennifer R. Cook

HEALTH INSURANCE AND MANAGED CARE (B) COMMITTEE

(Continued)

ERISA (B) Working Group

of the Regulatory Framework (B) Task Force

Robert Wake, Chair	Maine
Steve Ostlund	Alabama
Suzanne Tipton	Arkansas
Peg Brown	Colorado
Commissioner Doug Ommen	Iowa
Julie Holmes/ Cindy Hermes	Kansas
Korey Harvey	Louisiana
Kristi Bohn	Minnesota
Mary Mealer/Angela Nelson	Missouri
Martin Swanson	Nebraska
Jenny Patterson	New Hampshire
Ted Bader	Nevada
Ted Hamby	North Carolina
Michelle Brugh Rafeld	Ohio
Frank Stone	Oklahoma
Melissa Klemann	South Dakota
Doug Danzeiser/Angela Melina Raab	Texas
Tanji Northrup	Utah
Molly Nollette	Washington
Richard Wicka	Wisconsin

NAIC Staff Support: Jennifer R. Cook

HEALTH INSURANCE AND MANAGED CARE (B) COMMITTEE

(Continued)

SENIOR ISSUES (B) TASK FORCE

Lori K. Wing-Heier, Chair	Alaska
David Altmaier, Vice Chair	Florida
Jim L. Ridling	Alabama
Peter Fuimaono	American Samoa
Allen W. Kerr	Arkansas
Dave Jones	California
Michael Conway	Colorado
Katharine L. Wade	Connecticut
Trinidad Navarro	Delaware
Stephen C. Taylor	District of Columbia
Gordon I Ito	Hawaii
Dean L. Cameron	Idaho
Jennifer Hammer	Illinois
Stephen W. Robertson	Indiana
Doug Ommen	Iowa
Ken Selzer	Kansas
Nancy G. Atkins	Kentucky
James J. Donelon	Louisiana
Eric A. Cioppa	Maine
Al Redmer, Jr.,	Maryland
Gary Anderson	Massachusetts
Patrick M. McPharlin	Michigan
Jessica Looman	Minnesota
Mike Chaney	Mississippi
Chloria Lindley-Myers	Missouri
Bruce R. Range	Nebraska
Barbara D. Richardson	Nevada
Roger A. Sevigny	New Hampshire
Marlene Caride	New Jersey
John G. Franchini	New Mexico
Mike Causey	North Carolina
Jon Godfread	North Dakota
Jillian Froment	Ohio
John D. Doak	Oklahoma
Andrew Stolfi	Oregon
Jessica Altman	Pennsylvania
Larry Deiter	South Dakota
Julie Mix McPeak	Tennessee
Kent Sullivan	Texas
Todd E. Kiser	Utah
Scott A. White	Virginia
Mike Kreidler	Washington
Allan L. McVey	West Virginia
Ted Nickel	Wisconsin

NAIC Support Staff: David Torian

HEALTH INSURANCE AND MANAGED CARE (B) COMMITTEE

(Continued)

Long-Term Care Shopper's Guide (B) Working Group

of the Senior Issues (B) Task Force

Chis Herrick, Chair	Texas
Cindy Hermes, Vice Chair	Kansas
Tyler McKinney	California
Jen Lindberg/Tracy Swalwell	Iowa
Mary Mealer	Missouri
Anna Krylova	New Mexico
Tracy Bixler/Lars Thorne/Patty Sheldon	Pennsylvania
Mike Bryant	Washington

NAIC Support Staff: David Torian

Short Duration Long-Term Care Policies (B) Subgroup

of the Senior Issues (B) Task Force

Mary Ellen Breault, Chair	Connecticut
Tyler McKinney, Vice Chair	California
Craig Wright	Florida
Rebecca Vaughan	Indiana
Craig VanAalst	Kansas
Stephanie McGaughey-Bowker	Kentucky
Mary Mealer	Missouri
Laura Arp	Nebraska
Jennifer Patterson	New Hampshire
Anna Krylova	New Mexico
Frank Stone	Oklahoma
Tracy Bixler	Pennsylvania
Doug Danzeiser	Texas
Jaakob Sundberg	Utah
J.P. Wieske	Wisconsin

NAIC Support Staff: David Torian

PROPERTY AND CASUALTY INSURANCE (C) COMMITTEE

Jennifer Hammer, Chair	Illinois
Allan L. McVey, Vice Chair	West Virginia
Jim L. Ridling	Alabama
Michael Conway	Colorado
Katharine L. Wade	Connecticut
David Altmaier	Florida
James J. Donelon	Louisiana
Al Redmer Jr.	Maryland
Roger A. Sevigny	New Hampshire
John G. Franchini	New Mexico
Jon Godfread	North Dakota
John D. Doak	Oklahoma
Javier Rivera Rios	Puerto Rico
Raymond G. Farmer	South Carolina
Larry Deiter	South Dakota

NAIC Support Staff: Aaron Brandenburg/ Kris DeFrain/Eric Nordman

Advisory Organization Examination Oversight (C) Working Group *of the Property and Casualty Insurance (C) Committee*

Timothy Schott, Chair	Maine
Michael Ricker	Alaska
William Lacy	Arkansas
George Bradner	Connecticut
Nathaniel Kevin Brown	District of Columbia
Amy Groszos	Florida
Michael P. Rohan	Illinois
Angela Nelson/Jim Mealer	Missouri
James Fox	New Hampshire
Joel Sander/Brian Gabbert	Oklahoma
Paula Pallozzi	Rhode Island
Daniel Nelson	South Dakota
Rebecca Nichols	Virginia
Mark Hooker	West Virginia

NAIC Support Staff: Paul Santillanes/Randy Helder

PROPERTY AND CASUALTY INSURANCE (C) COMMITTEE

(Continued)

Auto Insurance (C/D) Working Group

of the Property and Casualty Insurance (C) Committee and the Market Regulation and Consumer Affairs (D) Committee

Mike Chaney, Chair	Mississippi
Allen Kerr, Vice Chair	Arkansas
Charles Angell/Jerry Workman	Alabama
Dave Jones/Ken Allen	California
Bobbie Baca/Mike Conway	Colorado
Qing He/George Bradner	Connecticut
Ralph T. Hudgens	Georgia
Reid McClintock	Illinois
Heather Droge	Kansas
Warren Byrd	Louisiana
Richard Bradley	Massachusetts
Teri L. Morante	Michigan
Phillip Vigliaturo	Minnesota
Angela Nelson	Missouri
John G. Franchini	New Mexico
Anthony Yoder	New York
Timothy Johnson	North Carolina
John D. Doak	Oklahoma
Andrew Stolfi	Oregon
Michael McKenney	Pennsylvania
Paula Pallozzi	Rhode Island
Mark Worman/J'ne Byckovski	Texas
Tracy Klausmeier	Utah
Rebecca Nichols	Virginia
Candice Myrum	Washington
Roger Frings	Wisconsin

NAIC Support Staff: Aaron Brandenburg/Eric C. Nordman/Timothy B. Mullen

PROPERTY AND CASUALTY INSURANCE (C) COMMITTEE

(Continued)

Catastrophe Insurance (C) Working Group

of the Property and Casualty Insurance (C) Committee

Mike Chaney, Chair	Mississippi
David Altmaier, Vice Chair	Florida
Charles Angell/Jerry Workman	Alabama
Emil R. Mackey	Alaska
Ron Dahlquist	California
George Bradner	Connecticut
Gordon I. Ito	Hawaii
Robert P. Rapp	Illinois
Heather Droge	Kansas
James J. Donelon	Louisiana
Joy Hatchette	Maryland
Matthew Mancini/Jerry Condon	Massachusetts
Angela Nelson	Missouri
Peter L. Hartt	New Jersey
Tom Botsko	Ohio
Cuc Nguyen/Brian Gabbert	Oklahoma
David Dahl/Ying Liu	Oregon
Paula Pallozzi	Rhode Island
Will Davis	South Carolina
Michael Humphreys	Tennessee
Nancy Olsen	Wyoming

NAIC Support Staff: Sara Robben

Climate Change and Global Warming (C) Working Group

of the Property and Casualty Insurance (C) Committee

Mike Kreidler, Chair	Washington
Dave Jones, Vice Chair	California
Katharine L. Wade/George Bradner	Connecticut
Caleb Huntington	Massachusetts
Peter Brickwedde	Minnesota
Derek Oestreicher	Montana
John G. Franchini	New Mexico
Marshal Bozzo	New York
Tracy Snow/Tom Botsko	Ohio
Andrew Stolfi	Oregon

NAIC Support Staff: Anne Obersteadt

PROPERTY AND CASUALTY INSURANCE (C) COMMITTEE

(Continued)

Lender-Placed Insurance Model Act (C) Working Group

of the Property and Casualty Insurance (C) Committee

David Altmaier, Chair	Florida
Alex Romero	Alaska
Joel Laucher/Ken Allen/Lynne Wehmueller	California
Sharon Shipp	District of Columbia
Ron Henderson	Louisiana
David Browning	Mississippi
John G. Franchini	New Mexico
Buddy Combs	Oklahoma
Elizabeth Kelleher Dwyer	Rhode Island
Mark Worman/J'ne Byckovski	Texas
Rebecca Nichols	Virginia
Roger Frings/Jill M. Kelly	Wisconsin

NAIC Support: Aaron Brandenburg

Medical Professional Liability (C) Working Group

of the Property and Casualty Insurance (C) Committee

John G. Franchini, Chair	New Mexico
James Mills, Vice Chair	Oklahoma
Trinidad Navarro	Delaware
Dean L. Cameron	Idaho
Judy Mottar	Illinois
Stephen Robertson/Amy Beard/Doug Webber	Indiana
Heather Droge	Kansas
Kevin Dyke	Michigan
Brent Kabler/Molly White	Missouri
Eric Slavich	Washington

NAIC Support Staff: Denise Matthews

PROPERTY AND CASUALTY INSURANCE (C) COMMITTEE

(Continued)

Terrorism Insurance Implementation (C) Working Group

of the Property and Casualty Insurance (C) Committee

Martha Lees, Chair	New York
Susan Stapp	California
Katharine L. Wade/George Bradner	Connecticut
Stephen C. Taylor/Angela King	District of Columbia
David Altmaier	Florida
Reid McClintock	Illinois
Heather Droge	Kansas
Gary Anderson/Christopher M. Joyce	Massachusetts
Angela Nelson	Missouri
Carl Sornson	New Jersey
Timothy Johnson	North Carolina
John D. Doak/Cuc Nguyen	Oklahoma
Paula Pallozzi	Rhode Island
Kent Sullivan/Mark Worman	Texas
Rebecca Nichols	Virginia

NAIC Support Staff: Eric C. Nordman/Aaron Brandenburg

Transparency and Readability of Consumer Information (C) Working Group

of the Property and Casualty Insurance (C) Committee

Angela Nelson, Chair	Missouri
Charles Angell/Jerry Workman	Alabama
Ken Allen	California
Michael Conway/Bobbie Baca	Colorado
George Bradner	Connecticut
Reid McClintock	Illinois
Heather Droge	Kansas
Ron Henderson	Louisiana
Joy Hatchette	Maryland
Daniel Bryden	Minnesota
Kathy Shortt	North Carolina
Jana K. Jarrett	Ohio
Nancy Olsen	Wyoming

NAIC Support Staff: Sara Robben

PROPERTY AND CASUALTY INSURANCE (C) COMMITTEE
(Continued)

Travel Insurance (C) Working Group
of the Property and Casualty Insurance (C) Committee

Al Redmer Jr., Chair	Maryland
Rebecca Nichols, Vice-Chair	Virginia
Susan Stapp	California
George Bradner	Connecticut
Colin B. Johnson, Sr.	District of Columbia
David Altmaier	Florida
Gordon I. Ito	Hawaii
Mike Rohan	Illinois
James J. Donelon	Louisiana
Tammy Lohmann	Minnesota
Angela Nelson	Missouri
John G. Franchini	New Mexico
Timothy Johnson	North Carolina
John D. Doak	Oklahoma
Jessica Altman	Pennsylvania
Elizabeth Kelleher Dwyer/Matthew Gendron	Rhode Island
Todd E. Kiser	Utah
TBD	Washington

NAIC Support Staff: Denise Matthews/Aaron Brandenburg

PROPERTY AND CASUALTY INSURANCE (C) COMMITTEE

(Continued)

CASUALTY ACTUARIAL AND STATISTICAL (C) TASK FORCE

James J. Donelon, Chair	Louisiana
Jessica Looman, Vice Chair	Minnesota
Jim L. Ridling	Alabama
Lori K. Wing-Heier	Alaska
Dave Jones	California
Michael Conway	Colorado
Katharine L. Wade	Connecticut
Stephen C. Taylor	District of Columbia
David Altmaier	Florida
Gordon I Ito	Hawaii
Jennifer Hammer	Illinois
Doug Ommen	Iowa
Ken Selzer	Kansas
Eric A. Cioppa	Maine
Patrick M. McPharlin	Michigan
Chlora Lindley-Myers	Missouri
Barbara D. Richardson	Nevada
Marlene Caride	New Jersey
Maria T Vullo	New York
Mike Causey	North Carolina
Jillian Froment	Ohio
John D. Doak	Oklahoma
Andrew Stolfi	Oregon
Jessica Altman	Pennsylvania
Raymond G. Farmer	South Carolina
Kent Sullivan	Texas
Mike Kreidler	Washington

NAIC Support Staff: Kris DeFrain/Jennifer Gardner

PROPERTY AND CASUALTY INSURANCE (C) COMMITTEE

(Continued)

Actuarial Opinion (C) Working Group

of the Casualty Actuarial and Statistical (C) Task Force

Julie Lederer, Chair
Susan Gozzo Andrews
Judy Mottar
Gordon Hay
Tom Botsko
Frank Stone
Kevin Clark
Jennifer Wu

Missouri
Connecticut
Illinois
Nebraska
Ohio
Oklahoma
Pennsylvania
Texas

NAIC Support Staff: Kris DeFrain

Statistical Data (C) Working Group

of the Casualty Actuarial and Statistical (C) Task Force

Carl Sornson, Chair
Wanchin Chou
David Christhilf
Rich Piazza
Alexander Vajda/Anthony Yoder
Arthur Schwartz
Tom Botsko/ Tom Hess
Frank Stone
David Dahl
Brian Ryder
Eric Slavich

New Jersey
Connecticut
District of Columbia
Louisiana
New York
North Carolina
Ohio
Oklahoma
Oregon
Texas
Washington

NAIC Staff Support: Libby Quinn

PROPERTY AND CASUALTY INSURANCE (C) COMMITTEE

(Continued)

SURPLUS LINES (C) TASK FORCE

James J. Donelon, Chair	Louisiana
Allan L. McVey	West Virginia
Lori K. Wing-Heier	Alaska
Dave Jones	California
Michael Conway	Colorado
Stephen C. Taylor	District of Columbia
Gordon I Ito	Hawaii
Jennifer Hammer	Illinois
Ken Selzer	Kansas
Nancy G. Atkins	Kentucky
Al Redmer, Jr.	Maryland
Mike Chaney	Mississippi
Mark O Rabauliman	N. Mariana Islands
Barbara D. Richardson	Nevada
Marlene Caride	New Jersey
Mike Causey	North Carolina
Elizabeth Kelleher Dwyer	Rhode Island
Raymond G. Farmer	South Carolina
Larry Deiter	South Dakota
Kent Sullivan	Texas
Todd E. Kiser	Utah
Mike Kreidler	Washington
Tom Glause	Wyoming

NAIC Support Staff: Bob Schump/Andy Daleo

Surplus Lines (C) Working Group

Of the Surplus Lines (C) Task Force

Stewart Guerin, Chair	Louisiana
Richard Schlesinger, Vice Chair	New Jersey
Maxine Froemling	Alaska
Emma Hirschhorn	California
Rolf Kaumann	Colorado
Virginia Christy	Florida
Mark Ossi	Georgia
Kevin Fry	Illinois
Robert Macullar	Massachusetts
TBD	New York
Joel Sander	Oklahoma
Lee Hill	South Carolina
Jeff Hunt	Texas
Doug Hartz	Washington

NAIC Support Staff: Bob Schump/Andy Daleo

PROPERTY AND CASUALTY INSURANCE (C) COMMITTEE

(Continued)

TITLE INSURANCE (C) TASK FORCE

Larry Deiter, Chair	South Dakota
David Altmaier, Vice Chair	Florida
Lori K. Wing-Heier	Alaska
Peter Fuimaono	American Samoa
Michael Conway	Colorado
Stephen C. Taylor	District of Columbia
Ralph T Hudgens	Georgia
Gordon I Ito	Hawaii
Dean L Cameron	Idaho
Ken Selzer	Kansas
James J. Donelon	Louisiana
Al Redmer, Jr.	Maryland
Patrick M. McPharlin	Michigan
Jessica Looman	Minnesota
Chlora Lindley-Myers	Missouri
Matthew Rosendale	Montana
Mark O Rabauliman	N. Mariana Islands
Bruce R. Range	Nebraska
Barbara D. Richardson	Nevada
John G Franchini	New Mexico
Mike Causey	North Carolina
Jillian Froment	Ohio
John D. Doak	Oklahoma
Raymond G. Farmer	South Carolina
Todd E. Kiser	Utah
Michael S. Pieciak	Vermont
Scott A. White	Virginia

NAIC Support Staff: Jennifer Gardner/Aaron Brandenburg

Title Insurance Financial Reporting (C) Working Group

of the Title Insurance (C) Task Force

Gordon Hay/Justin C. Schrader, Chair	Nebraska
Teresa Wong/Ron Dahlquist	California
Neil Derr	Colorado
Otis Phillips	New Mexico
Arthur Schwartz	North Carolina
Jennifer Wu	Texas

NAIC Support Staff: Aaron Brandenburg/Dave Keleher/Jennifer Gardner

PROPERTY AND CASUALTY INSURANCE (C) COMMITTEE

(Continued)

WORKERS' COMPENSATION (C) TASK FORCE

Lori K. Wing-Heier, Chair	Alaska
John G. Franchini, Vice Chair	New Mexico
Jim L. Ridling	Alabama
Peter Fuimaono	American Samoa
Keith Schraad	Arizona
Allen W. Kerr	Arkansas
Dave Jones	California
Katharine L. Wade	Connecticut
Trinidad Navarro	Delaware
Stephen C. Taylor	District of Columbia
David Altmaier	Florida
Ralph T Hudgens	Georgia
Gordon I Ito	Hawaii
Dean L Cameron	Idaho
Jennifer Hammer	Illinois
Doug Ommen	Iowa
Ken Selzer	Kansas
Nancy G. Atkins	Kentucky
James J. Donelon	Louisiana
Eric A Cioppa	Maine
Jessica Looman	Minnesota
Chlora Lindley-Myers	Missouri
Mark O Rabauliman	N. Mariana Islands
Roger A. Sevigny	New Hampshire
Mike Causey	North Carolina
John D. Doak	Oklahoma
Jessica Altman	Pennsylvania
Elizabeth Kelleher Dwyer	Rhode Island
Larry Deiter	South Dakota
Todd E. Kiser	Utah
Michael S. Pieciak	Vermont
Scott A. White	Virginia
Allan L. McVey	West Virginia
Ted Nickel	Wisconsin

NAIC Support Staff: Sara Robben/Aaron Brandenburg

PROPERTY AND CASUALTY INSURANCE (C) COMMITTEE

(Continued)

NAIC/IAIABC Joint (C) Working Group

of the Workers' Compensation (C) Task Force

Eric A. Cioppa, Chair	Maine
Allen W. Kerr/William Lacy	Arkansas
Ron Dahlquist	California
George Bradner	Connecticut
David Altmaier	Florida
Heather Droge	Kansas
Robin Coombs	Kentucky
Tammy Lohmann	Minnesota
Angela Nelson	Missouri
Gennady Stolyarov	Nevada
Robert Doucette	New Mexico
Cuc Nguyen/Frank Stone/Gordon Amini	Oklahoma
Paula Pallozzi	Rhode Island
Tracy L. Klausmeier	Utah
Michael S. Picciak/Kevin Gaffney	Vermont

NAIC Support Staff: Sara Robben/Aaron Brandenburg

MARKET REGULATION AND CONSUMER AFFAIRS (D) COMMITTEE

Allen W. Kerr, Chair	Arkansas
Lori K. Wing-Heier, Vice Chair	Alaska
Trinidad Navarro	Delaware
John P. Camacho	Guam
Stephen W. Robertson	Indiana
Doug Ommen	Iowa
Chlora Lindley-Myers	Missouri
Barbara D. Richardson	Nevada
John G. Franchini	New Mexico
Maria T. Vullo	New York
Mike Causey	North Carolina
Andrew Stolfi	Oregon
Jessica Altman	Pennsylvania
Michael Pieciak	Vermont
Mike Kreidler	Washington

NAIC Support Staff: Timothy B. Mullen

Market Actions (D) Working Group

of the Market Regulation and Consumer Affairs (D) Committee

Allen Kerr, Chair	Arkansas
Todd Kiser, Vice-Chair	Utah
Pam O'Connell	California
TBD	Illinois
Stephen W. Robertson	Indiana
Doug Ommen	Iowa
Stacy Rinehart	Kansas
Eric A. Cioppa	Maine
Paul Hanson	Minnesota
Jim Mealer	Missouri
Bruce R. Ramge	Nebraska
Mark McLeod	New York
Tracy Biehn	North Carolina
Angie Dingus	Ohio
Christopher Monahan	Pennsylvania
Ignatius Wheeler	Texas
Jeanette Plitt	Washington
Mark A. Hooker	West Virginia

NAIC Support Staff: Paul Santillanes/Randy Helder

MARKET REGULATION AND CONSUMER AFFAIRS (D) COMMITTEE
(Continued)

ANTIFRAUD (D) TASK FORCE

John D. Doak, Chair	Oklahoma
John G. Franchini, Vice Chair	New Mexico
Lori K. Wing-Heier	Alaska
Allen W. Kerr	Arkansas
Dave Jones	California
Michael Conway	Colorado
Katharine L. Wade	Connecticut
Trinidad Navarro	Delaware
Stephen C. Taylor	District of Columbia
Ralph T Hudgens	Georgia
Dean L. Cameron	Idaho
Doug Ommen	Iowa
Ken Selzer	Kansas
Nancy G. Atkins	Kentucky
James J. Donelon	Louisiana
Al Redmer, Jr.	Maryland
Patrick M. McPharlin	Michigan
Jessica Looman	Minnesota
Mike Chaney	Mississippi
Chloria Lindley-Myers	Missouri
Mark O Rabauliman	N. Mariana Islands
Bruce R. Range	Nebraska
Barbara D. Richardson	Nevada
Roger A. Sevigny	New Hampshire
Maria T Vullo	New York
Mike Causey	North Carolina
Jon Godfread	North Dakota
Jillian Froment	Ohio
Jessica Altman	Pennsylvania
Larry Deiter	South Dakota
Kent Sullivan	Texas
Todd E. Kiser	Utah
Scott A. White	Virginia
Mike Kreidler	Washington
Allan L. McVey	West Virginia
Tom Glause	Wyoming

NAIC Support Staff: Greg Welker/Lois E. Alexander

MARKET REGULATION AND CONSUMER AFFAIRS (D) COMMITTEE

(Continued)

Antifraud Education Enhancement (D) Working Group

of the Antifraud (D) Task Force

Roberta Baca, Chair	New Mexico
Michelle Rafeld, Vice Chair	Ohio
Alex Romero	Alaska
Melissa Grisham/Ryan James/Russ Galbraith	Arkansas
Simon Blank	Florida
Matt Stewart	Louisiana
Armand Glick	Utah

NAIC Support Staff: Greg Welker

I

Antifraud Technology (D) Working Group

of the Antifraud (D) Task Force

George Mueller, Chair	California
Melissa Grisham/Ryan James/Russ Galbraith	Arkansas
Simon Blank	Florida
Matt Stewart	Louisiana
Roberta Baca	New Mexico
Shane Guyant	North Carolina
Michelle Rafeld	Ohio
Armand Glick	Utah
Mike Beavers	Virginia

NAIC Support Staff: Greg Welker

MARKET REGULATION AND CONSUMER AFFAIRS (D) COMMITTEE

(Continued)

MARKET INFORMATION SYSTEMS (D) TASK FORCE

Mike Kreidler, Chair	Washington
Lori K. Wing-Heier, Vice Chair	Alaska
Peter Fuimaono	American Samoa
Allen W. Kerr	Arkansas
Dave Jones	California
Michael Conway	Colorado
Stephen C. Taylor	District of Columbia
Jennifer Hammer	Illinois
Doug Ommen	Iowa
Ken Selzer	Kansas
Nancy G. Atkins	Kentucky
James J. Donelon	Louisiana
Jessica Looman	Minnesota
Chlora Lindley-Myers	Missouri
Roger A. Sevigny	New Hampshire
Marlene Caride	New Jersey
Mike Causey	North Carolina
Jon Godfread	North Dakota
Jillian Froment	Ohio
John D. Doak	Oklahoma
Andrew Stolfi	Oregon
Kent Sullivan	Texas
Allan L. McVey	West Virginia

NAIC Support Staff: Randy Helder

Market Information Systems Research & Development (D) Working Group

of the Market Information Systems (D) Task Force

Brent Kabler, Chair	Missouri
Mark Hooker, Vice Chair	West Virginia
Chelsy Maller	Alaska
Cheryl Hawley	Arizona
Don McKinley/Pam O'Connell	California
Stacy Rinehart	Kansas
Russell Hamblen	Kentucky
Angela Dingus	Ohio
Rachel Cloyd/Ignatius Wheeler	Texas
Suzette Green-Wright	Utah
John Haworth	Washington
Jo LeDuc	Wisconsin

NAIC Support Staff: Ginny Ewing

MARKET REGULATION AND CONSUMER AFFAIRS (D) COMMITTEE

(Continued)

Market Analysis Procedures (D) Working Group

of the Market Regulation and Consumer Affairs (D) Committee

John Haworth, Chair	Washington
Mark Hooker, Vice Chair	West Virginia
Maria Ailor	Arizona
Melissa Grisham/Ryan James/Russ Galbraith	Arkansas
Don McKinley	California
Damion Hughes	Colorado
Steve DeAngelis/Mark Duffy	Connecticut
Frank Pyle	Delaware
Lee Backus	District of Columbia
Amy Groszos	Florida
Michael P. Rohan	Illinois
Tate Flott	Kansas
Russ Hamblen	Kentucky
Jeff Zewe	Louisiana
Tim Schott	Maine
Dawna Kokosinski	Maryland
Rich Bradley/Mary Lou Moran	Massachusetts
Christopher Gleason/Jill Huisken	Michigan
Paul Hanson	Minnesota
Jim Mealer	Missouri
Jeannie Keller	Montana
Bruce R. Ramage	Nebraska
Peggy Willard-Ross	Nevada
Edwin Pugsley	New Hampshire
Clifton Day	New Jersey
Mark W. Jordan	New Mexico
Stephen Doody/Larry Wertel	New York
Angela Dingus	Ohio
Joel Sander	Oklahoma
Jeffrey Arnold	Pennsylvania
Michael Bailes	South Carolina
Suzette Green-Wright	Utah
Kevin Gafney	Vermont
Will Felvey	Virginia
Rebecca Rebholz	Wisconsin

NAIC Support Staff: Teresa Cooper/Randy Helder

MARKET REGULATION AND CONSUMER AFFAIRS (D) COMMITTEE

(Continued)

Market Conduct Examination Standards (D) Working Group

of the Market Regulation and Consumer Affairs (D) Committee

Bruce R. Range, Chair	Nebraska
Jim Mealer, Vice Chair	Missouri
Melissa Grisham/Ryan James/Russ Galbraith	Arkansas
Damion Hughes	Colorado
Kurt Swan	Connecticut
Lee Backus/Sharon Shipp	District of Columbia
Mark Ossi/Debra Peirce	Georgia
Doug Ommen	Iowa
Russell Hamblen	Kentucky
Rich Bradley	Massachusetts
Paul Hanson	Minnesota
Peggy Willard-Ross	Nevada
Win Pugsley	New Hampshire
Cliff Day	New Jersey
Sylvia Lawson	New York
Angela Dingus	Ohio
Joel Sander	Oklahoma
Constance Arnold	Pennsylvania
Christina Rouleau	Vermont
Julie Fairbanks	Virginia
Jeanette Plitt	Washington
Mark Hooker	West Virginia
Rebecca Rebholz	Wisconsin

NAIC Support Staff: Petra Wallace/Lois E. Alexander

Market Conduct Annual Statement Blanks (D) Working Group

of the Market Regulation and Consumer Affairs (D) Committee

Maria Ailor, Chair	Arizona
Angela Dingus, Vice Chair	Ohio
Melissa Grisham/Ryan James/Russ Galbraith	Arkansas
Kurt Swan	Connecticut
Amy Groszos	Florida
Lori Cunningham	Kentucky
Paul Hanson	Minnesota
Jim Mealer/Brent Kabler	Missouri
Michael Bailes	South Carolina
Lisa Borchert/Ned Gaines/John Haworth	Washington
Mark Hooker	West Virginia
Jo LeDuc	Wisconsin

NAIC Support Staff: Tressa Smith/Teresa Cooper

MARKET REGULATION AND CONSUMER AFFAIRS (D) COMMITTEE

(Continued)

Market Regulation Certification (D) Working Group

of the Market Regulation and Consumer Affairs (D) Committee

Stephen W. Robertson, Chair	Indiana
Mike Causey, Vice Chair	North Carolina
Lori K. Wing-Heier	Alaska
Allen W. Kerr/Melissa Grisham/Ryan James/Russ Galbraith	Arkansas
Michael P. Rohan/TBD	Illinois
Doug Ommen	Iowa
Al Redmer Jr.	Maryland
Gary Anderson	Massachusetts
Jessica Looman	Minnesota
Chlora Lindley-Myers	Missouri
Bruce R. Range	Nebraska
Roger A. Sevigny	New Hampshire
Peter Hartt	New Jersey
John G. Franchini	New Mexico
Jillian Froment	Ohio
John D. Doak	Oklahoma
Andrew Stolfi	Oregon
Jessica Altman	Pennsylvania
Raymond G. Farmer	South Carolina
Todd E. Kiser	Utah
Michael Pieciak	Vermont
Jaqueline K. Cunningham	Virginia
Mike Kreidler	Washington
Allan L. McVey	West Virginia
Tom Glause	Wyoming

NAIC Support Staff: Randy Helder/Timothy B. Mullen

Pre-Dispute Mandatory Arbitration Clauses (D) Working Group

of the Market Regulation and Consumer Affairs (D) Committee

Susan Stapp, Co-Chair	California
TK Keen, Co-Chair	Oregon
Melissa Grisham/Ryan James/Russ Galbraith	Arkansas
Kurt Swan	Connecticut
Anoush Brangaccio	Florida
Kathleen Nakasone	Hawaii
Arlene Knighten	Louisiana
Rich Bradley	Massachusetts
Cynthia Amann	Missouri
Robert Doucette	New Mexico
Christopher Mulvihill/Bruce Wells	New York
Amanda Baird	Ohio
Kara Mace/David Muckerheide	Texas
Jeff Rude	Wyoming

NAIC Support Staff: Timothy B. Mullen/Randy Helder

MARKET REGULATION AND CONSUMER AFFAIRS (D) COMMITTEE

(Continued)

Public Adjuster (C/D) Working Group

of the Market Regulation and Consumer Affairs (D) Committee and the Property and Casualty Insurance (C) Committee

Buddy Combs, Chair	Oklahoma
Chris Murray	Alaska
Melissa Grisham/Ryan James/Russ Galbraith	Arkansas
Kim Johnson -Woods	California
Bobbie Baca	Colorado
David Murphy	Illinois
Vanessa Miller	Mississippi
Carrie Couch	Missouri
Jeannie Keller	Montana
Barbara Richardson	Nevada
John G. Franchini	New Mexico
Tynesia A. Dorsey	Ohio
Rachel Chester	Rhode Island
Pat Murray	Vermont
Jeff Baughman	Washington

NAIC Support Staff: Timothy B. Mullen/Aaron Brandenburg

MARKET REGULATION AND CONSUMER AFFAIRS (D) COMMITTEE

(Continued)

PRODUCER LICENSING (D) TASK FORCE

Barbara D. Richardson, Chair	Nevada
Larry Deiter, Vice Chair	South Dakota
Jim L. Ridling	Alabama
Lori K. Wing-Heier	Alaska
Peter Fuimaono	American Samoa
Allen W. Kerr	Arkansas
Dave Jones	California
Michael Conway	Colorado
Katharine L. Wade	Connecticut
David Altmaier	Florida
Gordon I Ito	Hawaii
Dean L. Cameron	Idaho
Jennifer Hammer	Illinois
Doug Ommen	Iowa
Ken Selzer	Kansas
Nancy G. Atkins	Kentucky
James J. Donelon	Louisiana
Patrick M. McPharlin	Michigan
Jessica Looman	Minnesota
Mike Chaney	Mississippi
Chlora Lindley-Myers	Missouri
Matthew Rosendale	Montana
Bruce R. Ramge	Nebraska
Roger A. Sevigny	New Hampshire
Maria T Vullo	New York
Mike Causey	North Carolina
Jon Godfread	North Dakota
Jillian Froment	Ohio
John D. Doak	Oklahoma
Andrew Stolfi	Oregon
Elizabeth Kelleher Dwyer	Rhode Island
Raymond G. Farmer	South Carolina
Kent Sullivan	Texas
Todd E. Kiser	Utah
Michael S. Pieciak	Vermont
Scott A. White	Virginia
Mike Kreidler	Washington
Allan L. McVey	West Virginia
Ted Nickel	Wisconsin

NAIC Support Staff: Timothy B. Mullen/Greg Welker

MARKET REGULATION AND CONSUMER AFFAIRS (D) COMMITTEE
(Continued)

Uniform Education (D) Working Group
of the Producer Licensing (D) Task Force

TBD , Chair	
TBD ,Vice Chair	
Chris Murray	Alaska
Melissa Grisham/Ryan James/Russ Galbraith	Arkansas
Keith Kuzmich	California
Matthew Guy	Florida
Michele Riddering	Michigan
Vanessa Miller	Mississippi
Otis Phillips	New Mexico
Kelvin Zimmer	North Dakota
Tynesia Dorsey/Karen Vourvopoulos	Ohio
Rachel Chester	Rhode Island

NAIC Support Staff: Greg Welker

Producer Licensing Uniformity (D) Working Group
of the Producer Licensing (D) Task Force

Chris Murray, Chair	Alaska
Karen Vourvopoulos, Vice Chair	Ohio
Melissa Grisham/Ryan James/Russ Galbraith	Arkansas
Keith Kuzmich	California
Matthew Guy	Florida
Lisa Tordjman	Idaho
Michele Riddering	Michigan
Kevin Schlautman	Nebraska
Joy Miller	Nevada
Otis Phillips	New Mexico
Kelvin Zimmer	North Dakota
Wilma Orozco Fanfan	Puerto Rico
Rachel Chester	Rhode Island
Dan Nelson	South Dakota
Mike Beavers	Virginia
Jeff Baughman	Washington

NAIC Support Staff: Greg Welker

FINANCIAL CONDITION (E) COMMITTEE

David Altmaier, Chair	Florida
Tom Glause, Vice Chair	Wyoming
Keith Schraad	Arizona
Dave Jones	California
Michael Conway	Colorado
Jennifer Hammer	Illinois
Ken Selzer	Kansas
Nancy G. Atkins	Kentucky
Eric A. Cioppa	Maine
Matthew Rosendale	Montana
Marlene Caride	New Jersey
Mark O. Rabauliman	N. Mariana Islands
Jillian Froment	Ohio
Kent Sullivan	Texas
Scott A. White	Virginia

NAIC Support Staff: Dan Daveline/Julie Gann/Bruce Jenson

FINANCIAL CONDITION (E) COMMITTEE

(Continued)

Financial Analysis (E) Working Group

of the Financial Condition (E) Committee

Doug Slape, Chair	Texas
Kevin Fry, Vice-Chair	Illinois
Emma Hirschhorn	California
Kathryn Belfi	Connecticut
Dave Lonchar	Delaware
Carolyn Morgan/Virginia Christy	Florida
Jim Armstrong	Iowa
John Turchi	Massachusetts
Judy Weaver	Michigan
Leslie Nehring	Missouri
Justin Schrader	Nebraska
John Sirovetz	New Jersey
Mark McLeod/Marc Allen	New York
Lori Gorman	North Carolina
Dale Bruggeman	Ohio
Joe DiMemmo	Pennsylvania
Ed Buyalos	Virginia
Amy Malm	Wisconsin

NAIC Support Staff: Andy Daleo/Jane Koenigsman

Group Capital Calculation (E) Working Group

of the Financial Condition (E) Committee

David Altmaier, Chair	Florida
Ron Dahlquist/Susan Bernard	California
Kathy Belfi	Connecticut
Philip Barlow	District of Columbia
Kevin Fry	Illinois
Gary Anderson	Massachusetts
Leslie Nehring	Missouri
Justin Schrader	Nebraska
Peter L. Hartt	New Jersey
Edward Kiffel	New York
Jackie Obusek	North Carolina
Dale Bruggeman	Ohio
Mike Boerner/Doug Slape	Texas
Doug Stolte/David Smith	Virginia

NAIC Support Staff: Julie L. Garber

FINANCIAL CONDITION (E) COMMITTEE

(Continued)

Group Solvency Issues (E) Working Group

of the Financial Condition (E) Committee

Justin Schrader, Chair	Nebraska
Doug Slape, Vice Chair	Texas
Emma Hirschhorn	California
Kathy Belfi	Connecticut
Charles Santana	Delaware
David Altmaier	Florida
Eric Moser	Illinois
Roy Eft	Indiana
Jim Armstrong	Iowa
John Turchi	Massachusetts
Judy Weaver	Michigan
Leslie Nehring	Missouri
Steve Kerner/Kristine Maurer	New Jersey
Margot Small	New York
Dale Bruggeman / Tim Biler	Ohio
Joe DiMemmo	Pennsylvania
Doug Stolte	Virginia
Steve Junior	Wisconsin

NAIC Support Staff: Bruce Jenson/Jane Koenigsman

ORSA Implementation (E) Subgroup

of the Group Solvency Issues (E) Working Group

Kathy Belfi, Co-Chair	Connecticut
Mike Yanacheak, Co-Chair	Iowa
Susan Bernard/Ron Dahlquist	California
Robert Ridenour	Florida
Eric Moser	Illinois
Leslie Nehring/Julie Lederer	Missouri
Justin Schrader/Rhonda Ahrens	Nebraska
Patricia Gosselin and Doug Bartlett	New Hampshire
Jim Matheson/Edward Kiffel	New York
Dave Cook/Jeff Lehr	Ohio
Mike Arendall	Texas
Amy Malm	Wisconsin

NAIC Support Staff: Bruce Jenson

FINANCIAL CONDITION (E) COMMITTEE

(Continued)

Mortgage Guaranty Insurance (E) Working Group

of the Financial Condition (E) Committee

Ted Nickel, Chair	Wisconsin
Kurt Regner	Arizona
Monica Macaluso	California
Robert Ballard	Florida
John Rehagen	Missouri
Margot Small	New York
Jackie Obusek	North Carolina
Joe DiMemmo	Pennsylvania
Doug Slape	Texas

NAIC Support Staff: Andy Daleo

NAIC/AICPA (E) Working Group

of the Financial Condition (E) Committee

Doug Stolte, Chair	Virginia
Jim Armstrong, Vice-Chair	Iowa
Laura Clements/Susan Bernard	California
Rylynn Brown	Delaware
Judy Weaver	Michigan
Leslie Nehring	Missouri
Justin Schrader	Nebraska
Doug Bartlett	New Hampshire
Dale Bruggeman	Ohio
Ryan Keeling	Oregon
Joe DiMemmo	Pennsylvania
Johanna Nickelson	South Dakota
Jake Garn	Utah

NAIC Support Staff: Bruce Jenson

FINANCIAL CONDITION (E) COMMITTEE

(Continued)

Risk-Focused Surveillance (E) Working Group

of the Financial Condition (E) Committee

Leslie Nehring, Co-Chair	Missouri
Justin Schrader, Co-Chair	Nebraska
Richard Ford	Alabama
Susan Bernard	California
William Arfanis/Kathy Belfi	Connecticut
Carolyn Morgan/Robert Ridenour	Florida
Cindy Andersen	Illinois
Roy Eft	Indiana
Jim Armstrong/Daniel Mathis	Iowa
Stewart Guerin	Louisiana
Vanessa Sullivan	Maine
Dimitriy Valekha	Maryland
Judy Weaver	Michigan
Patricia Gosselin	New Hampshire
Steve Kerner	New Jersey
Mark McLeod	New York
Tony Riddick/Jackie Obusek	North Carolina
Dwight Radel/Tracy Snow	Ohio
Eli Snowbarger	Oklahoma
Ryan Keeling	Oregon
Joe DiMemmo	Pennsylvania
Jack Broccoli	Rhode Island
Teresa Saldana	Texas
Jake Garn	Utah
Dan Petterson	Vermont
David Smith	Virginia
Patrick McNaughton	Washington
Amy Malm	Wisconsin

NAIC Support Staff: Bruce Jenson/Jane Koenigsman

FINANCIAL CONDITION (E) COMMITTEE

(Continued)

Risk-Limiting Contracts (E) Working Group

of the Financial Condition (E) Committee

Kevin Fry, Chair	Illinois
Karen Adams	Arizona
Susan Gozzo Andrews	Connecticut
Robert Ridenour	Florida
Mark Ossi	Georgia
Leslie Nehring	Missouri
Tom Botsko/Dale Bruggeman	Ohio
David Dahl	Oregon
Will Davis	South Carolina
Doug Slape	Texas

NAIC Support Staff: Larry Bruning

Valuation Analysis (E) Working Group

of the Financial Condition (E) Committee

Mike Boerner, Chair	Texas
Fred Andersen, Vice-Chair	Minnesota
Perry Kupferman	California
James Jakielo	Connecticut
Lisa Parker	Florida
Bruce Sartain	Illinois
Mike Yanacheak	Iowa
Judy Weaver	Michigan
John Rehagen	Missouri
Rhonda Ahrens	Nebraska
William Carmello	New York
Peter Weber	Ohio
Tomasz Serbinowski	Utah
Doug Stolte	Virginia
Randy Milquet	Wisconsin

NAIC Support Staff: Larry Bruning

FINANCIAL CONDITION (E) COMMITTEE

(Continued)

National Treatment and Coordination (E) Working Group

Joel Sander Co-Chair	Oklahoma
Jeff Hunt, Co-Chair	Texas
Cindy Hathaway	Colorado
Kathy Belfi	Connecticut
Alisa Pritchard	Delaware
Mary Mostoller	Florida
Stewart Guerin	Louisiana
Debbie Doggett	Missouri
Victoria Baca	New Mexico
Matt Fischer	North Dakota
Cameron Piatt	Ohio
Greg Lathrop	Oregon
Cressinda Bybee	Pennsylvania
Jay Sueoka	Utah
Ron Pastuch	Washington
Linda Johnson	Wyoming

NAIC Support Staff: Jane Barr

Biographical Third-Party Review (E) Subgroup

of the National Treatment and Coordination (E) Working Group

Cameron Piatt, Chair	Ohio
Mary Mostoller	Florida
Amy Stuart	Illinois
Kathy Lamb	Nevada
Jay Sueoka	Utah
Ron Pastuch	Washington

NAIC Support Staff: Jane Barr/Crystal Brown

Variable Annuities Issues (E) Working Group

Mike Yanacheak, Chair	Iowa
Kim Hudson	California
Michael Colburn	Connecticut
Judy Weaver	Michigan
Fred Andersen	Minnesota
John Rehagen	Missouri
Justin Schrader	Nebraska
Seong-min Eom	New Jersey
William Carmello	New York
Peter Weber	Ohio

NAIC Support Staff: Dan Daveline

FINANCIAL CONDITION (E) COMMITTEE

(Continued)

ACCOUNTING PRACTICES AND PROCEDURES (E) TASK FORCE

Dave Jones, Chair	California
Kent Sullivan, Vice Chair	Texas
Jim L. Ridling	Alabama
Lori K. Wing-Heier	Alaska
Peter Fuimaono	American Samoa
Allen W. Kerr	Arkansas
Katharine L. Wade	Connecticut
Trinidad Navarro	Delaware
Stephen C. Taylor	District of Columbia
David Altmaier	Florida
Artemio B Ilagan	Guam
Gordon I Ito	Hawaii
Stephen W Robertson	Indiana
Doug Ommen	Iowa
Ken Selzer	Kansas
Nancy G. Atkins	Kentucky
James J. Donelon	Louisiana
Eric A Cioppa	Maine
Gary Anderson	Massachusetts
Patrick M. McPharlin	Michigan
Jessica Looman	Minnesota
Mike Chaney	Mississippi
Chlora Lindley-Myers	Missouri
Bruce R. Ramge	Nebraska
Roger A. Sevigny	New Hampshire
Marlene Caride	New Jersey
Maria T Vullo	New York
Mike Causey	North Carolina
Jon Godfread	North Dakota
Jillian Froment	Ohio
John D. Doak	Oklahoma
Jessica Altman	Pennsylvania
Elizabeth Kelleher Dwyer	Rhode Island
Larry Deiter	South Dakota
Julie Mix McPeak	Tennessee
Todd E. Kiser	Utah
Michael S. Pieciak	Vermont
Scott A. White	Virginia
Mike Kreidler	Washington
Allan L. McVey	West Virginia
Ted Nickel	Wisconsin
Tom Glause	Wyoming

NAIC Support Staff: Robin Marcotte

FINANCIAL CONDITION (E) COMMITTEE

(Continued)

Blanks (E) Working Group

of the Accounting Practices and Procedures (E) Task Force

Jake Garn, Chair	Utah
Kim Hudson, Vice Chair	California
Richard Ford	Alabama
Maxine Froemling	Alaska
William Arfanis	Connecticut
Dave Lonchar	Delaware
N. Kevin Brown	District of Columbia
Carolyn Morgan	Florida
Roy Eft	Indiana
Daniel Mathis	Iowa
Dan Schaefer	Michigan
Debbie Doggett	Missouri
Lindsay Crawford/Justin Schrader	Nebraska
Patricia Gosselin	New Hampshire
Steve Kerner	New Jersey
Tracy Snow	Ohio
Joel Sander	Oklahoma
Ryan Keeling	Oregon
Joe DiMemmo	Pennsylvania
Michael Humphreys	Tennessee
Shawn Frederick	Texas
Karen Murphy	Vermont
Steven Drutz	Washington
Jamie Taylor	West Virginia
Elena Vetrina	Wisconsin

NAIC Support Staff: Mary Caswell/Calvin Ferguson/Julie Gann

Statutory Accounting Principles (E) Working Group

of the Accounting Practices and Procedures (E) Task Force

Dale Bruggeman, Chair	Ohio
Jim Armstrong, Vice Chair	Iowa
Richard Ford	Alabama
Kim Hudson	California
Kathy Belfi	Connecticut
Dave Lonchar	Delaware
Eric Moser	Illinois
Caroline Brock/Stewart Guerin	Louisiana
Judy Weaver	Michigan
Doug Bartlett	New Hampshire
Stephen Wiest	New York
Joe DiMemmo	Pennsylvania
Doug Slape/Jamie Walker	Texas
Doug Stolte/David Smith	Virginia
Elena Vetrina	Wisconsin

NAIC Support Staff: Julie Gann/Robin Marcotte

FINANCIAL CONDITION (E) COMMITTEE

(Continued)

CAPITAL ADEQUACY (E) TASK FORCE

David Altmaier, Chair	Florida
Todd E. Kiser, Vice Chair	Utah
Jim L. Ridling	Alabama
Lori K. Wing-Heier	Alaska
Dave Jones	California
Katharine L. Wade	Connecticut
Trinidad Navarro	Delaware
Stephen C. Taylor	District of Columbia
Dean L. Cameron	Idaho
Jennifer Hammer	Illinois
Doug Ommen	Iowa
Ken Selzer	Kansas
Jessica Looman	Minnesota
Mike Chaney	Mississippi
Chlora Lindley-Myers	Missouri
Matthew Rosendale	Montana
Barbara D. Richardson	Nevada
Marlene Caride	New Jersey
John G. Franchini	New Mexico
Maria T. Vullo	New York
Mike Causey	North Carolina
Jillian Froment	Ohio
John D. Doak	Oklahoma
Kent Sullivan	Texas
Mike Kreidler	Washington
Ted Nickel	Wisconsin

NAIC Support Staff: Jane Barr/Lou Felice

FINANCIAL CONDITION (E) COMMITTEE

(Continued)

Health Risk-Based Capital (E) Working Group

of the Capital Adequacy (E) Task Force

Patrick McNaughton, Chair	Washington
Richard Hinkel, Vice-Chair	Wisconsin
Steve Ostlund	Alabama
Michael Muldoon	Colorado
Wanchin Chou	Connecticut
Carolyn Morgan / Lisa Parker	Florida
Tish Becker	Kansas
Kristi Bohn	Minnesota
Annette James	Nevada
Stephen Wiest	New York
Kim Rankin	Pennsylvania
Mike Boerner / Aaron Hodges	Texas

NAIC Support Staff: Crystal Brown/Eva Yeung

Investment Risk-Based Capital (E) Working Group

of the Capital Adequacy (E) Task Force

Kevin Fry, Chair	Illinois
Philip Barlow, Vice Chair	District of Columbia
Greg Lieber	California
Kathy Belfi	Connecticut
Shawn Steinly	Florida
Tish Becker	Kansas
Anna Taam	New York
Tom Botsko	Ohio
Steven Drutz	Washington
Richard Hinkel	Wisconsin

NAIC Support Staff: Julie L. Garber

FINANCIAL CONDITION (E) COMMITTEE

(Continued)

Life Risk-Based Capital (E) Working Group

of the Capital Adequacy (E) Task Force

Philip Barlow, Chair	District of Columbia
Steve Ostlund	Alabama
Perry Kupferman	California
Deborah Batista	Colorado
Wanchin Chou	Connecticut
Lisa Parker	Florida
Bruce Sartain/Vincent Tsang	Illinois
Tish Becker	Kansas
Fred Andersen	Minnesota
William Leung	Missouri
Rhonda Ahrens	Nebraska
Seong-min Eom	New Jersey
William Carmello	New York
Frank Stone	Oklahoma
Mike Boerner	Texas

NAIC Support Staff: Dave Fleming/Eva Yeung

FINANCIAL CONDITION (E) COMMITTEE

(Continued)

C-3 Phase II/AG 43 (E/A) Subgroup

of the of the Life Risk-Based Capital (E) Working Group and Life Actuarial (A) Task Force

Peter Weber, Chair	Ohio
Philip Barlow	District of Columbia
Nicole Boyd	Kansas
Frederick Andersen	Minnesota
William Leung	Missouri
William Carmello	New York
Mike Boerner	Texas

NAIC Support Staff: Dave Fleming/Eva Yeung

Joint Longevity Risk (A/E) Subgroup

of the Life Actuarial (A) Task Force and Life Risk-Based Capital (E) Working Group

Rhonda Ahrens , Chair	Nebraska
Mike Yanacheak	Iowa
John Robinson	Minnesota
Seong-min Eom	New Jersey
William Carmello	New York
Peter Weber	Ohio

NAIC Support Staff: Dave Fleming

FINANCIAL CONDITION (E) COMMITTEE

(Continued)

Operational Risk (E) Subgroup

of the Capital Adequacy (E) Task Force

Stephen Wiest, Chair	New York
Richard Ford	Alabama
Ron Dahlquist	California
Tish Becker	Kansas
John Robinson	Minnesota
Anna Krylova	New Mexico
John D. Doak/Joel Sander	Oklahoma
Steven Drutz / Patrick McNaughton	Washington
Richard Hinkel	Wisconsin

NAIC Support Staff: Lou Felice/Jane Barr

Property and Casualty Risk-Based Capital (E) Working Group

of the Capital Adequacy (E) Task Force

Tom Botsko, Chair	Ohio
Richard Ford	Alabama
Ron Dahlquist / Giovanni Muzzarelli	California
Mitchell Bronson	Colorado
Wanchin Chou	Connecticut
Robert Ridenour	Florida
Judy Mottar	Illinois
TBD	New Mexico
Gloria Huberman/Sak-man Luk	New York
Dale Bruggeman	Ohio
Will Davis	South Carolina
Nicole Elliott / Jennifer Wu	Texas
Randy Milquet	Wisconsin

NAIC Support Staff: Eva Yeung/Crystal Brown

FINANCIAL CONDITION (E) COMMITTEE

(Continued)

Catastrophe Risk (E) Subgroup

of the Property and Casualty Risk-Based Capital (E) Working Group

Ron Dahlquist, Chair	California
Robert Ridenour, Vice Chair	Florida
Giovanni Muzzarelli	California
Mitchell Bronson	Colorado
Wanchin Chou	Connecticut
Judy Mottar	Illinois
Gordon Hay	Nebraska
TBD	New Mexico
Sak-man Luk	New York
Tom Botsko / Dale Bruggeman	Ohio
John D. Doak / Frank Stone	Oklahoma
Will Davis	South Carolina
Nicole Elliott /Jennifer Wu	Texas

NAIC Support Staff: Eva Yeung/Crystal Brown

FINANCIAL CONDITION (E) COMMITTEE

(Continued)

EXAMINATION OVERSIGHT (E) TASK FORCE

Jillian Froment, Chair	Ohio
Allen W. Kerr, Vice Chair	Arkansas
Jim L. Ridling	Alabama
Lori K. Wing-Heier	Alaska
Dave Jones	California
Michael Conway	Colorado
Katharine L. Wade	Connecticut
Trinidad Navarro	Delaware
Stephen C. Taylor	District of Columbia
Gordon I Ito	Hawaii
Dean L. Cameron	Idaho
Stephen W. Robertson	Indiana
Doug Ommen	Iowa
Ken Selzer	Kansas
Nancy G. Atkins	Kentucky
James J. Donelon	Louisiana
Gary Anderson	Massachusetts
Patrick M. McPharlin	Michigan
Jessica Looman	Minnesota
Mike Chaney	Mississippi
Chloria Lindley-Myers	Missouri
Bruce R. Ramage	Nebraska
Roger A. Sevigny	New Hampshire
Marlene Caride	New Jersey
John D. Doak	Oklahoma
Elizabeth Kelleher Dwyer	Rhode Island
Larry Deiter	South Dakota
Kent Sullivan	Texas
Todd E. Kiser	Utah
Michael S. Pieciak	Vermont
Osbert Potter	Virgin Islands
Scott A. White	Virginia
Mike Kreidler	Washington
Ted Nickel	Wisconsin
Tom Glause	Wyoming

NAIC Support Staff: Miguel Romero

FINANCIAL CONDITION (E) COMMITTEE

(Continued)

Electronic Workpaper (E) Working Group

of the Examination Oversight (E) Task Force

Susan Bernard, Chair	California
Richard Ford	Alabama
William Arfanis	Connecticut
Charles Santana	Delaware
Jesse Alonzo	Illinois
Daniel Mathis	Iowa
Craig Rehse	Michigan
Grace Kelly	Minnesota
Eileen Fox	New York
Metty Nyangoro	Ohio
Eli Snowbarger	Oklahoma
Melissa Greiner	Pennsylvania
Ignatius Wheeler	Texas
Patrick McNaughton	Washington
Tom Jefferson	Wisconsin

NAIC Support Staff: Bruce Jenson/James Portuguese

Financial Analysis Handbook (E) Working Group

of the Examination Oversight (E) Task Force

Judy Weaver, Chair	Michigan
Sheila Travis	Alabama
Scott Persten/Kurt Regner	Arizona
Emma Hirschhorn	California
Kathy Belfi/Lynn Hein	Connecticut
N. Kevin Brown	District of Columbia
Eric Moser	Illinois
Roy Eft	Indiana
Lynn Beckner	Maryland
Debbie Doggett	Missouri
Patricia Gosselin	New Hampshire
Mary Pesce/John Sirovetz	New Jersey
James Matheson	New York
Dwight Radel/Tim Biler	Ohio
Ryan Keeling	Oregon
Kimberly Rankin	Pennsylvania
Jack Broccoli	Rhode Island
Amy Garcia/Teresa Saldana	Texas
Kristin Forsberg	Wisconsin

NAIC Support Staff: Rodney Good/Bill Rivers/Ralph Villegas

FINANCIAL CONDITION (E) COMMITTEE

(Continued)

Financial Analysis Research and Development (E) Working Group

of the Examination Oversight (E) Task Force

Judy Weaver, Chair	Michigan
Sheila Travis	Alabama
Emma Hirschhorn	California
Carolyn Morgan/Helen McGhin	Florida
Eric Moser	Illinois
Debbie Doggett	Missouri
Patricia Gosselin	New Hampshire
Mary Pesce/John Sirovetz	New Jersey
James Matheson	New York
Kimberly Rankin	Pennsylvania
Jack Broccoli	Rhode Island
Kristin Forsberg	Wisconsin

NAIC Support Staff: Rodney Good/Bill Rivers/Ralph Villegas

Financial Examiners Coordination (E) Working Group

of the Examination Oversight (E) Task Force

Patrick McNaughton, Co-Chair	Washington
Ignatius Wheeler, Co-Chair	Texas
Richard Ford	Alabama
Laura Clements	California
William Arfanis	Connecticut
Roy Eft	Indiana
George Hutschenreuter	Maryland
Robert Lamberjack	Michigan
Kathleen Orth	Minnesota
Leslie Nehring	Missouri
Justin Schrader	Nebraska
Steve Kerner	New Jersey
Tracy Snow/David Cook	Ohio
Joel Sander	Oklahoma
Melissa Greiner	Pennsylvania
Elena Vetrina	Wisconsin

NAIC Support Staff: Bailey Henning

FINANCIAL CONDITION (E) COMMITTEE

(Continued)

Financial Examiners Handbook (E) Technical Group

of the Examination Oversight (E) Task Force

Susan Bernard, Chair	California
Richard Ford	Alabama
William Arfanis	Connecticut
N. Kevin Brown	District of Columbia
Cindy Andersen	Illinois
Grace Kelly	Minnesota
Levi Nwasoria/Leslie Nehring	Missouri
Justin Schrader	Nebraska
Omar Akel/Renee Hanshaw	Nevada
Colin Wilkins	New Hampshire
Steve Kerner	New Jersey
Tracy Snow	Ohio
Joel Sander	Oklahoma
Melissa Greiner	Pennsylvania
Patrick McNaughton	Washington
John Litweiler	Wisconsin

NAIC Support Staff: Bailey Henning

IT Examination (E) Working Group

of the Examination Oversight (E) Task Force

Patrick McNaughton, Chair	Washington
Charles Turner	Alabama
Mel Anderson	Arkansas
Ber Vang	California
Ken Roulier	Connecticut
Ginny Godek	Illinois
Jerry Ehlers	Indiana
Shane Mead	Kansas
George Hutschenreuter	Maryland
Kim Dobbs/Cynthia Amann	Missouri
Justin Schrader	Nebraska
Eileen Fox	New York
Metty Nyangoro	Ohio
Eli Snowbarger	Oklahoma
Melissa Greiner	Pennsylvania
Dave Jensen	Wisconsin

NAIC Support Staff: Bailey Henning/Miguel Romero

FINANCIAL CONDITION (E) COMMITTEE

(Continued)

LONG TERM CARE INSURANCE (B/E) TASK FORCE

David Altmaier, Co-Chair	Florida
Dean L. Cameron, Co-Chair	Idaho
Jim L. Ridling	Alabama
Lori K. Wing-Heier	Alaska
Keith Schraad	Arizona
Dave Jones	California
Michael Conway	Colorado
Katharine L. Wade	Connecticut
Stephen C. Taylor	District of Columbia
Gordon I Ito	Hawaii
Jennifer Hammer	Illinois
Doug Ommen	Iowa
Ken Selzer	Kansas
Eric A Cioppa	Maine
Al Redmer, Jr.	Maryland
Patrick M. McPharlin	Michigan
Jessica Looman	Minnesota
Mike Chaney	Mississippi
Chlora Lindley-Myers	Missouri
Matthew Rosendale	Montana
Bruce R. Range	Nebraska
Barbara D. Richardson	Nevada
Mike Causey	North Carolina
John D. Doak	Oklahoma
Andrew Stolfi	Oregon
Jessica Altman	Pennsylvania
Javier Rivera Rios	Puerto Rico
Elizabeth Kelleher Dwyer	Rhode Island
Raymond G. Farmer	South Carolina
Larry Deiter	South Dakota
Kent Sullivan	Texas
Todd E. Kiser	Utah
Scott A. White	Virginia
Mike Kreidler	Washington
Allan L. McVey	West Virginia

NAIC Support Staff: Dan Daveline/Jolie H. Matthews/Eric King

FINANCIAL CONDITION (E) COMMITTEE

(Continued)

RECEIVERSHIP AND INSOLVENCY (E) TASK FORCE

Marlene Caride, Chair	New Jersey
Stephen C. Taylor, Co-Vice Chair	District of Columbia
Kent Sullivan, Co-Vice Chair	Texas
Lori K. Wing-Heier	Alaska
Peter Fuimaono	American Samoa
Allen W. Kerr	Arkansas
Dave Jones	California
Michael Conway	Colorado
Katharine L. Wade	Connecticut
David Altmaier	Florida
Gordon I Ito	Hawaii
Doug Ommen	Iowa
Ken Selzer	Kansas
Nancy G. Atkins	Kentucky
James J. Donelon	Louisiana
Gary Anderson	Massachusetts
Patrick M. McPharlin	Michigan
Chlora Lindley-Myers	Missouri
Matthew Rosendale	Montana
Bruce R. Ramage	Nebraska
John G Franchini	New Mexico
Maria T Vullo	New York
Mike Causey	North Carolina
John D. Doak	Oklahoma
Jessica Altman	Pennsylvania
Elizabeth Kelleher Dwyer	Rhode Island
Raymond G. Farmer	South Carolina
Todd E. Kiser	Utah
Scott A. White	Virginia
Mike Kreidler	Washington
Ted Nickel	Wisconsin
Tom Glause	Wyoming

NAIC Support Staff: Jane Koenigsman

FINANCIAL CONDITION (E) COMMITTEE

(Continued)

Receivership Financial Analysis (E) Working Group

of the Receivership and Insolvency (E) Task Force

David Wilson, Chair	California
Toma Wilkerson	Florida
Kevin Baldwin	Illinois
Jim Armstrong	Iowa
Scott Fischer	New York
Laura Lyon Slaymaker	Pennsylvania
James Kennedy	Texas

NAIC Support Staff: Jane Koenigsman

Receivership Large Deductible Workers Compensation (E) Working Group

of the Receivership and Insolvency (E) Task Force

James Mills, Chair	Oklahoma
Laura Slaymaker, Vice Chair	Pennsylvania
Maxine Froemling	Alaska
Steve Uhrynowycz	Arkansas
Toma Wilkerson	Florida
Mark Ossi	Georgia
Kevin Baldwin	Illinois
Tamara W. Kopp	Missouri
Matt Holman	Nebraska
Christopher Brennan	New Jersey
Bogdanka Kurahovic	New Mexico
James Kennedy	Texas

NAIC Support Staff: Jane Koenigsman

FINANCIAL CONDITION (E) COMMITTEE

(Continued)

Receivership Model Law (E) Working Group

of the Receivership and Insolvency (E) Task Force

James Kennedy, Chair	Texas
Doug Hartz, Vice Chair	Washington
Steve Uhrynowycz / Suzanne Tipton	Arkansas
John Battle / Jack Hom	California
Rolf Kaumann	Colorado
Jon Arsenault	Connecticut
Toma Wilkerson	Florida
Kevin Baldwin	Illinois
Jim Armstrong / Kim Cross	Iowa
Christopher Joyce	Massachusetts
James Gerber	Michigan
Tamara Kopp	Missouri
Matt Holman	Nebraska
Kristine Maurer	New Jersey
Laura Slaymaker	Pennsylvania
TBD	Utah
Tom Glause	Wyoming

NAIC Support Staff: Jane Koenigsman

FINANCIAL CONDITION (E) COMMITTEE

(Continued)

REINSURANCE (E) TASK FORCE

Maria T. Vullo, Chair	New York
Chlora Lindley-Myers, Vice Chair	Missouri
Jim L. Ridling	Alabama
Lori K. Wing-Heier	Alaska
Peter Fuimaono	American Samoa
Allen W. Kerr	Arkansas
Dave Jones	California
Michael Conway	Colorado
Katharine L. Wade	Connecticut
Trinidad Navarro	Delaware
Stephen C. Taylor	District of Columbia
David Altmaier	Florida
Ralph T Hudgens	Georgia
Gordon I Ito	Hawaii
Dean L Cameron	Idaho
Stephen W Robertson	Indiana
Doug Ommen	Iowa
Ken Selzer	Kansas
Nancy G. Atkins	Kentucky
James J. Donelon	Louisiana
Eric A Cioppa	Maine
Gary Anderson	Massachusetts
Mike Chaney	Mississippi
Matthew Rosendale	Montana
Bruce R. Ramge	Nebraska
Roger A. Sevigny	New Hampshire
Marlene Caride	New Jersey
Mike Causey	North Carolina
Jon Godfread	North Dakota
Jillian Froment	Ohio
John D. Doak	Oklahoma
Javier Rivera Rios	Puerto Rico
Elizabeth Kelleher Dwyer	Rhode Island
Raymond G. Farmer	South Carolina
Julie Mix McPeak	Tennessee
Kent Sullivan	Texas
Todd E. Kiser	Utah
Michael S. Pieciak	Vermont
Scott A. White	Virginia
Allan L. McVey	West Virginia
Ted Nickel	Wisconsin

NAIC Support Staff: Jake Stultz/Dan Schelp

FINANCIAL CONDITION (E) COMMITTEE

(Continued)

Reinsurance Financial Analysis (E) Working Group

of the Reinsurance (E) Task Force

John Rehagen, Chair	Missouri
Richard Ford	Alabama
Kurt Regner	Arizona
Emma Hirschhorn	California
Dave Lonchar	Delaware
Robert Ridenour	Florida
Mark Ossi	Georgia
Richard Schlesinger	New Jersey
James Matheson/Marc Allen	New York
Joe DiMemmo	Pennsylvania
Jeff Hunt	Texas
Doug Stolte	Virginia
Randy Milquet	Wisconsin

NAIC Support Staff: Andy Daleo

Qualified Jurisdiction (E) Working Group

of the Reinsurance (E) Task Force

TBD, Chair	Utah
Kathy Belfi	Connecticut
Virginia Christy	Florida
Mark Ossi	Georgia
Tom Travis	Louisiana
Robert Wake	Maine
John Rehagen/Kelly Hopper	Missouri
Richard Schlesinger	New Jersey
Brian Glaab	New York
Kimberly Rankin	Pennsylvania
Jeff Hunt	Texas

NAIC Support Staff: Dan Schelp/Matt Todd

FINANCIAL CONDITION (E) COMMITTEE

(Continued)

RISK RETENTION GROUP (E) TASK FORCE

Michael Pieciak, Chair	Vermont
Stephen C. Taylor, Vice Chair	District of Columbia
Trinidad Navarro	Delaware
Gordon I. Ito	Hawaii
James J. Donelon	Louisiana
Jessica Looman	Minnesota
Matthew Rosendale	Montana
Barbara D. Richardson	Nevada
John D. Doak	Oklahoma
Raymond G. Farmer	South Carolina

NAIC Support Staff: Becky Meyer/Sara Franson

VALUATION OF SECURITIES (E) TASK FORCE

Jennifer Hammer, Chair	Illinois
James J. Donelon, Vice Chair	Louisiana
Lori K. Wing-Heier	Alaska
Dave Jones	California
Katharine L. Wade	Connecticut
Trinidad Navarro	Delaware
David Altmaier	Florida
Gordon I Ito	Hawaii
Dean L Cameron	Idaho
Ken Selzer	Kansas
Al Redmer, Jr.	Maryland
Gary Anderson	Massachusetts
Bruce R. Range	Nebraska
Barbara D. Richardson	Nevada
Marlene Caride	New Jersey
Maria T Vullo	New York
John D. Doak	Oklahoma
Doug Ommen	Iowa
Jessica Altman	Pennsylvania
Kent Sullivan	Texas
Todd E. Kiser	Utah
Scott A. White	Virginia
Mike Kreidler	Washington
Ted Nickel	Wisconsin

NAIC Support Staff: Charles A. Therriault/Robert Carcano

**FINANCIAL REGULATION STANDARDS AND
ACCREDITATION (F) COMMITTEE**

Todd E. Kiser, Chair	Utah
Elizabeth Kelleher Dwyer, Vice Chair	Rhode Island
Jim L. Ridling	Alabama
Allen W. Kerr	Arkansas
Katharine L. Wade	Connecticut
Gordon I. Ito	Hawaii
Eric A. Cioppa	Maine
Patrick M. McPharlin	Michigan
Mike Chaney	Mississippi
Bruce R. Ramge	Nebraska
Marlene Caride	New Jersey
Larry Deiter	South Dakota
Kent Sullivan	Texas
Scott A. White	Virginia
Tom Glause	Wyoming

NAIC Support Staff: Becky Meyer/Julie L. Garber

INTERNATIONAL INSURANCE RELATIONS (G) COMMITTEE

Katharine L. Wade, Chair	Connecticut
Chloria Lindley-Myers, Vice Chair	Missouri
Peter Fuimaono	American Samoa
Stephen C. Taylor	District of Columbia
David Altmaier	Florida
Gordon I. Ito	Hawaii
Doug Ommen	Iowa
James J. Donelon	Louisiana
Gary Anderson	Massachusetts
Patrick M. McPharlin	Michigan
Bruce R. Range	Nebraska
Marlene Caride	New Jersey
Maria T. Vullo	New York
John D. Doak	Oklahoma
Raymond G. Farmer	South Carolina

NAIC Support Staff: Ethan Sonnichsen/Ryan Workman

NAIC/CONSUMER LIAISON COMMITTEE

Stephen C. Taylor, Chair	District of Columbia
Allen W. Kerr, Vice Chair	Arkansas
Jim L. Ridling	Alabama
Lori K. Wing-Heier	Alaska
Peter Fuimaono	American Samoa
Dave Jones	California
Michael Conway	Colorado
Katharine L. Wade	Connecticut
Trinidad Navarro	Delaware
David Altmaier	Florida
Dean L. Cameron	Idaho
Stephen W. Robertson	Indiana
Ken Selzer	Kansas
James J. Donelon	Louisiana
Al Redmer, Jr.	Maryland
Jessica Looman	Minnesota
Mike Chaney	Mississippi
Chloria Lindley-Myers	Missouri
Bruce R. Ramge	Nebraska
Barbara D. Richardson	Nevada
John G. Franchini	New Mexico
Mike Causey	North Carolina
Jon Godfread	North Dakota
Jillian Froment	Ohio
John D. Doak	Oklahoma
Andrew Stolfi	Oregon
Jessica Altman	Pennsylvania
Kent Sullivan	Texas
Todd E. Kiser	Utah
Scott A. White	Virginia
Mike Kreidler	Washington
Allan L. McVey	West Virginia
Ted Nickel	Wisconsin

NAIC Support Staff: Lois E. Alexander

NAIC/CONSUMER LIAISON COMMITTEE

(continued)

NAIC/American Indian and Alaska Native Liaison Committee

Lori K. Wing-Heier, Chair	Alaska
Matthew Rosendale, Vice Chair	Montana
Michael Conway	Colorado
Dean L. Cameron	Idaho
Jessica Looman	Minnesota
Mark O Rabauliman	N. Mariana Islands
John G. Franchini	New Mexico
Mike Causey	North Carolina
Jon Godfread	North Dakota
John D. Doak	Oklahoma
Andrew Stolfi	Oregon
Larry Deiter	South Dakota
Mike Kreidler	Washington
Ted Nickel	Wisconsin

NAIC Support Staff: Lois E. Alexander

NAIC/INDUSTRY LIAISON COMMITTEE

Allen W. Kerr, Chair	Arkansas
Allan L. McVey, Vice Chair	West Virginia
Jim L. Ridling	Alabama
Lori K. Wing-Heier	Alaska
Peter Fuimaono	American Samoa
Keith Schraad	Arizona
Stephen C. Taylor	District of Columbia
David Altmaier	Florida
Dean L. Cameron	Idaho
Ken Selzer	Kansas
Nancy G. Atkins	Kentucky
James J. Donelon	Louisiana
Mike Chaney	Mississippi
Chlora Lindley-Myers	Missouri
Mark O Rabauliman	N. Mariana Islands
Bruce R. Range	Nebraska
Roger A. Sevigny	New Hampshire
John G. Franchini	New Mexico
Jon Godfread	North Dakota
John D. Doak	Oklahoma
Jessica Altman	Pennsylvania
Larry Deiter	South Dakota
Todd E. Kiser	Utah
Michael S. Pieciak	Vermont
Osbert Potter	Virgin Islands
Scott A. White	Virginia

NAIC Support Staff: Mark Sagat/Chara Bradstreet

NAIC/STATE GOVERNMENT LIAISON COMMITTEE

Julie Mix McPeak, Chair	Tennessee
Eric A. Cioppa, Vice Chair	Maine
Lori K. Wing-Heier	Alaska
Jim L. Ridling	Alabama
Allen W. Kerr	Arkansas
Peter Fuimaono	American Samoa
Michael Conway	Colorado
Stephen C. Taylor	District of Columbia
Trinidad Navarro	Delaware
Dean L. Cameron	Idaho
Jennifer Hammer	Illinois
Ken Selzer	Kansas
Nancy G. Atkins	Kentucky
Al Redmer, Jr.	Maryland
Jessica Looman	Minnesota
Chlora Lindley-Myers	Missouri
Mark O Rabauliman	N. Mariana Islands
Mike Causey	North Carolina
Jon Godfread	North Dakota
Roger A. Sevigny	New Hampshire
John G Franchini	New Mexico
Jillian Froment	Ohio
John D. Doak	Oklahoma
Andrew Stolfi	Oregon
Larry Deiter	South Dakota
Kent Sullivan	Texas
Mike Kreidler	Washington

NAIC Support Staff: Mark Sagat/Chara Bradstreet

2018 MEMBERS BY ZONES

Northeast Zone

Katharine L. Wade, Chair
Elizabeth Kelleher Dwyer, Vice Chair
Stephen C. Taylor, Secretary

Connecticut
Rhode Island
District of Columbia

Trinidad Navarro
Eric A. Cioppa
Gary Anderson
Al Redmer Jr
Roger A. Sevigny
Marlene Caride
Maria T. Vullo
Jessica Altman
Michael S. Pieciak

Delaware
Maine
Massachusetts
Maryland
New Hampshire
New Jersey
New York
Pennsylvania
Vermont

Southeast Zone

Jim L. Ridling, Chair
Mike Chaney, Vice Chair
James J. Donelon, Secretary

Alabama
Mississippi
Louisiana

Allen W. Kerr
David Altmaier
Ralph T. Hudgens
Nancy G. Atkins
Mike Causey
Javier Rivera Rios
Raymond G. Farmer
Julie Mix McPeak
Scott A. White
Osbert E. Potter
Allan L. McVey

Arkansas
Florida
Georgia
Kentucky
North Carolina
Puerto Rico
South Carolina
Tennessee
Virginia
Virgin Islands
West Virginia

Midwest Zone

John D. Doak, Chair
Stephen W. Robertson, Vice Chair
Larry Deiter, Secretary

Oklahoma
Indiana
South Dakota

Jennifer Hammer
Doug Ommen
Ken Selzer
Patrick M. McPharlin
Jessica Looman
Chlora Lindley-Myers
Bruce R. Ramge
Jon Godfread
Jillian Froment
Ted Nickel

Illinois
Iowa
Kansas
Michigan
Minnesota
Missouri
Nebraska
North Dakota
Ohio
Wisconsin

Western Zone

Dean L. Cameron, Chair
Todd E. Kiser, Vice Chair
Lori K. Wing-Heier, Secretary

Idaho
Utah
Alaska

Peter Fuimaono
Keith Schraad
Dave Jones
Michael Conway
John P. Camacho
Gordon I. Ito
Matthew Rosendale
Mark O. Rabauliman
Barbara D. Richardson
John G. Franchini
Andrew Stolfi
Kent Sullivan
Mike Kreidler
Tom Glause

American Samoa
Arizona
California
Colorado
Guam
Hawaii
Montana
N. Mariana Islands
Nevada
New Mexico
Oregon
Texas
Washington
Wyoming